

The following sample(s) was/were submitted and identified on behalf of the client as:

Sample Description : COPPOR ICE BUCKET, COPPER BOSTON SHAKER, COPPER COCKTAIL SHAKER, COPPER JULEP CUP, COPPER STRAINER, COPPER FINE STRAINER, COPPER JULEP STAINER, COPPER SPOON, COPPER PICK, COPPER HAMMERED MOSCOW MULE MUG, COPPER MOSCOW MULE MUG, COPPER MUG, COPPER OPENER, COPPER ICE TONG, COPPER JIGGER, COPPER COLEY JIGGER, COPPER MATRINI GLASS, COPPER WINE GLASS

SGS Ref No. : CAN16-037610

Sample Receiving Date : Mar. 14, 2016

Test Performing Date : Mar. 14, 2016 to Mar. 18, 2016

Test Performed : Selected test(s) as requested by applicant

Test Result(s) : For further details, please refer to the following page(s)

Result Summary :

Test Requested

German Food, Articles of Daily Use and Feed Code of September 1, 2005 (LFGB), Section 30 & 31 with Amendments and Technical Guide on Metals and alloys used in food contact materials of Council of Europe Resolution CM/Res(2013)9– Specific migration of heavy metal

Conclusion

PASS

Signed for and on behalf of
Xiamen Branch, SGS-CSTC Co., Ltd.



Sharky Xia
Approved Signatory



Unless otherwise agreed in writing, this document is issued by the Company subject to its General Conditions of Service printed overleaf, available on request or accessible at <http://www.sgs.com/en/Terms-and-Conditions.aspx> and, for electronic format documents, subject to Terms and Conditions for Electronic Documents at <http://www.sgs.com/en/Terms-and-Conditions/Terms-e-Documents.aspx>. Attention is drawn to the limitation of liability, indemnification and jurisdiction issues defined therein. Any holder of this document is advised that information contained hereon reflects the Company's findings at the time of its intervention only and within the limits of Client's instructions, if any. The Company's sole responsibility is to its Client and this document does not exonerate parties to a transaction from exercising all their rights and obligations under the transaction documents. This document cannot be reproduced except in full, without prior written approval of the Company. Any unauthorized alteration, forgery or falsification of the content or appearance of this document is unlawful and offenders may be prosecuted to the fullest extent of the law. Unless otherwise stated the results shown in this test report refer only to the sample(s) tested and such sample(s) are retained for 30 days only.

Attention: To check the authenticity of testing / inspection report & certificate, please contact us at telephone: (86-755) 8307 1443, or email: CN.Doccheck@sgs.com

No.31 Xianghong Road, Xiang'an Torch Industrial Zone, Xiamen, Fujian Province, China 361101 t (86-592) 5766537 f (86-592) 5766460 www.sgs.com.cn
中国·福建·厦门·火炬(翔安)产业区翔虹路31号 邮编: 361101 t (86-592) 5766537 f (86-592) 5766460 e sgs.china@sgs.com



Test Report

No.: XMHL1603001612CW

Date: Mar. 23, 2016

Page 2 of 4

Test Results :

Test Part Description :

Specimen No.	SGS Sample ID	Description	Material (claimed by the client)
SN1	CAN16-037610.001	Silver-grey metal mug(inner)	stainless steel metal+plating

German Food, Articles of Daily Use and Feed Code of September 1, 2005 (LFGB), Section 30 & 31 with Amendments and Technical Guide on Metals and alloys used in food contact materials of Council of Europe Resolution CM/Res(2013)9– Specific migration of heavy metal

Test Method : With reference to EN13130-1:2004 for selection of test method; analysis was performed by ICP-OES and ICP-MS.

Sample 001:

Simulant Used : 0.5% Citric acid (W/V) aqueous solution

Test Condition : 70°C 2.0hr(s)

The ratio of surface area to volume was : 6.3 sq.dm/kg

Test Item(s)	Limit	Unit	MDL	1st + 2nd Migration
Aluminium(Al)	35	mg/kg	0.2	ND
Antimony(Sb)	0.28	mg/kg	0.02	ND
Chromium(Cr)	1.75	mg/kg	0.1	ND
Cobalt(Co)	0.14	mg/kg	0.01	ND
Copper(Cu)	28	mg/kg	0.1	2.0
Iron(Fe)	280	mg/kg	0.25	2.93
Manganese(Mn)	12.6	mg/kg	0.25	ND
Molybdenum(Mo)	0.84	mg/kg	0.02	ND
Nickel(Ni)	0.98	mg/kg	0.05	0.27
Silver(Ag)	0.56	mg/kg	0.03	ND
Tin (Sn)	700	mg/kg	5	ND
Vanadium(V)	0.07	mg/kg	0.005	ND
Zinc(Zn)	35	mg/kg	1	ND
Arsenic(As)	0.014	mg/kg	0.001	ND
Barium(Ba)	8.4	mg/kg	0.25	ND
Beryllium(Be)	0.07	mg/kg	0.005	ND
Cadmium(Cd)	0.035	mg/kg	0.002	ND
Lead(Pb)	0.07	mg/kg	0.005	ND
Lithium(Li)	0.336	mg/kg	0.02	ND
Mercury(Hg)	0.021	mg/kg	0.002	ND
Thallium(Tl)	0.0007	mg/kg	0.0001	ND



Unless otherwise agreed in writing, this document is issued by the Company subject to its General Conditions of Service printed overleaf, available on request or accessible at <http://www.sgs.com/en/Terms-and-Conditions.aspx> and, for electronic format documents, subject to Terms and Conditions for Electronic Documents at <http://www.sgs.com/en/Terms-and-Conditions/Terms-e-Documents.aspx>. Attention is drawn to the limitation of liability, indemnification and jurisdiction issues defined therein. Any holder of this document is advised that information contained hereon reflects the Company's findings at the time of its intervention only and within the limits of Client's instructions, if any. The Company's sole responsibility is to its Client and this document does not exonerate parties to a transaction from exercising all their rights and obligations under the transaction documents. This document cannot be reproduced except in full, without prior written approval of the Company. Any unauthorized alteration, forgery or falsification of the content or appearance of this document is unlawful and offenders may be prosecuted to the fullest extent of the law. Unless otherwise stated the results shown in this test report refer only to the sample(s) tested and such sample(s) are retained for 30 days only.

Attention: To check the authenticity of testing / inspection report & certificate, please contact us at telephone: (86-755) 8307 1443, or email: CN.Doccheck@sgs.com

No.31 Xianghong Road, Xiang'an Torch Industrial Zone, Xiamen, Fujian Province, China 361101 t (86-592) 5766537 f (86-592) 5766460 www.sgs.com.cn
 中国·福建·厦门·火炬(翔安)产业区翔虹路31号 邮编: 361101 t (86-592) 5766537 f (86-592) 5766460 e sgs.china@sgs.com

Test Item(s)	Limit	Unit	MDL	3rd Migration
Aluminium(Al)	5	mg/kg	0.2	ND
Antimony(Sb)	0.04	mg/kg	0.02	ND
Chromium(Cr)	0.25	mg/kg	0.1	ND
Cobalt(Co)	0.02	mg/kg	0.01	ND
Copper(Cu)	4	mg/kg	0.1	ND
Iron(Fe)	40	mg/kg	0.25	ND
Manganese(Mn)	1.8	mg/kg	0.25	ND
Molybdenum(Mo)	0.12	mg/kg	0.02	ND
Nickel(Ni)	0.14	mg/kg	0.05	ND
Silver(Ag)	0.08	mg/kg	0.03	ND
Tin (Sn)	100	mg/kg	5	ND
Vanadium(V)	0.01	mg/kg	0.005	ND
Zinc(Zn)	5	mg/kg	1	ND
Arsenic(As)	0.002	mg/kg	0.001	ND
Barium(Ba)	1.2	mg/kg	0.25	ND
Beryllium(Be)	0.01	mg/kg	0.005	ND
Cadmium(Cd)	0.005	mg/kg	0.002	ND
Lead(Pb)	0.01	mg/kg	0.005	ND
Lithium(Li)	0.048	mg/kg	0.02	ND
Mercury(Hg)	0.003	mg/kg	0.002	ND
Thallium(Tl)	0.0001	mg/kg	0.0001	ND

Notes :

1. mg/kg = milligram per kilogram of foodstuff in contact with
2. MDL = Method Detection Limit
3. ND = Not Detected (< MDL)

Remark :

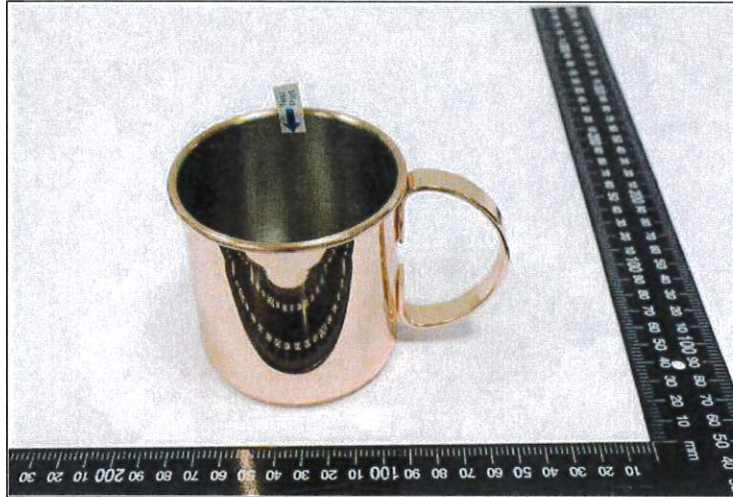
1. This test was subcontracted to SGS other qualified subcontractor.
2. The content of this test report is extracted from the test report number XMHL1603001268CW.



Unless otherwise agreed in writing, this document is issued by the Company subject to its General Conditions of Service printed overleaf, available on request or accessible at <http://www.sgs.com/en/Terms-and-Conditions.aspx> and, for electronic format documents, subject to Terms and Conditions for Electronic Documents at <http://www.sgs.com/en/Terms-and-Conditions/Terms-e-Documents.aspx>. Attention is drawn to the limitation of liability, indemnification and jurisdiction issues defined therein. Any holder of this document is advised that information contained hereon reflects the Company's findings at the time of its intervention only and within the limits of Client's instructions, if any. The Company's sole responsibility is to its Client and this document does not exonerate parties to a transaction from exercising all their rights and obligations under the transaction documents. This document cannot be reproduced except in full, without prior written approval of the Company. Any unauthorized alteration, forgery or falsification of the content or appearance of this document is unlawful and offenders may be prosecuted to the fullest extent of the law. Unless otherwise stated the results shown in this test report refer only to the sample(s) tested and such sample(s) are retained for 30 days only.
 Attention: To check the authenticity of testing / inspection report & certificate, please contact us at telephone: (86-755) 8307 1443, or email: CN.Doccheck@sgs.com

No.31 Xianghong Road, Xiang'an Torch Industrial Zone, Xiamen, Fujian Province, China 361101 t (86-592) 5766537 f (86-592) 5766460 www.sgs.com.cn
 中国·福建·厦门·火炬(翔安)产业区翔虹路31号 邮编: 361101 t (86-592) 5766537 f (86-592) 5766460 e sgs.china@sgs.com

Sample photo(s):



CAN16-037610.001



Product photo

The testing report/certificate only refers to the sample(s) tested.

End of Report