

**Declaration of Conformity
 For Polycarbonate Products**

1. Names and addresses

Seller
 CAMBRO Manufacturing
 5801 Skylab Rd.96S
 Huntington Beach, California

Manufacturer
 Cambro Manufacturing

2. General requirements

We CAMBRO Manufacturing (supplying company) confirm the materials and articles listed below or in the attachment

The analyses performed by pH Srl – gruppo TÜV SÜD on the following samples:

23-FC01305-025853
 23-FC01306-025853

Item Description	Item Number
Divider Bars	DIV12
	DIV20
Camwear®	2SFSCW
	4SFSCW
	6SFSCW
	8SFSCW
	12SFSCW
	18SFSCW
	22SFSCW
Camsquares® FreshPro Food Storage Containers	2SFSPROCW
	4SFSPROCW
	6SFSPROCW
	8SFSPROCW
	12SFSPROCW
	18SFSPROCW
	22SFSPROCW

Camwear® Round Food Storage Containers	RFSCW1
	RFSCW2
	RFSCW4
	RFSCW6
	RFSCW8
	RFSCW12
	RFSCW18
	RFSCW22
Camwear® Food Pans GN 1/1	12CW
	14CW
	16CW
	18CW
	10CWD
Camwear® Food Pans GN 2/4	22LPCW
	24LPCW
	20LPCWD
Camwear® Food Pans GN 1/2	22CW
	24CW
	26CW
	28CW
	20CWD
Camwear® Food Pans GN 1/3	32CW
	34CW
	36CW
	38CW
	30CWD
Camwear® Food Pans GN 1/4	42CW
	44CW
	46CW
	40CWD
Camwear® Food Pans GN 1/6	62CW
	64CW
	66CW
	60CWD
Camwear® Food Pans GN 1/8	82CW
	84CW
	86CW
	80CWD
Camwear® Food Pans GN 1/9	92CW
	94CW
	96PCW
	90CWD
Camwear® Boxes	18263CW
	18266CW
	18269CW

Camwear® Boxes	182612CW
	182615CW
	12183CW
	12186CW
	12189CW
Camwear® Covers	RFSCWC1
	RFSCWC2
	RFSCWC6
	RFSCWC12
Camwear® Covers	1826CCW
	1826SCCW
	1218CCW
	1218SCCW
Drain Shelf	1826DSCW
	1218DSCW
Colander	1826CLRCW
	18268CLRCW
	18268CLRKIT
Camwear® Colander Pans GN 1/1	13CLRCW
	15CLRCW
Camwear® Colander Pans GN 1/2	23CLRCW
	25CLRCW
Camwear® Colander Pans GN 1/3	33CLRCW
	35CLRCW
Camwear® Colander Pans GN 1/6	63CLRCW
	65CLRCW
Camwear® Lids GN 1/1	10CWC
	10CWCH
	10CWCHN
	10CWGL
Camwear® Lids GN 2/4	20LPCWC
Camwear® Lids GN 1/2	20CWC
	20CWCH
	20CWCHN
	20CWL
	20CWLN
	20CWGL
Camwear® Lids GN 1/3	30CWC
	30CWCH
	30CWCHN
	30CWL
	30CWLN
	30CWGL

Camwear® Lids GN 1/4	40CWC
	40CWCH
	40CWCHN
Camwear® Lids GN 1/6	60CWC
	60CWCH
	60CWCHN
	60CWL
	60CWLN
	60CWGL
Camwear® Lids GN 1/8	80CWC
	80CWCH
	80CWCHN
Camwear® Lids GN 1/9	90CWC
	90WCN
	90CWL
	90CWLN
Camwear® Dry Scoops	SCP6CW
	SCP12CW
	SCP24CW
	SCP64CW
Camwear® Polycarbonate Measuring Cups	25MCCW
	50MCCW
	100MCCW
	200MCCW
	400MCCW
Camwear® Huntington Tumblers	HT5CW
	HT8CW
	HT10CW
	HT120CW
	HT12CW
	HT14CW
	HT16CW
	HT22CW
Camwear® Tumblers	500CW
	800CW
	850CW
	950CW
	1200CW
	1600CW
Camwear® Camliter® Beverage Decanters	WW250
	WW500
	WW1000
	WW1500

Pitchers	P320CW
	P34CW
	P480CW
	P600CW
	P60CW
	P64CW
	PC64CW
	PE600CW
	PL60CW
Swirl Bowls	SRB5CW
	SRB13CW
Pebbled Pedestal Punch Bowls	PPB15
	PPB18
	PPB23
Dinnerware	90SPCW
	120CWP
	93CW
	HK93BCW
	10CWNR
	9CWNR
	825CWNR
	725CWNR
	65CWNR
	55CWNR
	10CW
Dinnerware	10CWL
	35CW
	45CW
	50CW
	60CW
	100CW
	150CW
	75CW
	96CW
HK93CW	

Camwear® Camcovers	806CW
	900CW
	901CW
	905CW
	909CW
	9011CW
	9013CW
	1000CW
	1005CW
	1007CW
	1013CW
	1101CW
	1202CW
	MDCPC9CW
Bud Vase	BV6CW
Round Pebbled Bowls	PSB6
	PSB8
	PSB10
	PSB12
	PSB15
	PSB18
	PSB23
Rectangular Ribbed Bowls	RSB912CW
	RSB1014CW
	RSB1419CW
Round Ribbed Bowls	RSB6CW
	RSB8CW
	RSB10CW
	RSB12CW
	RSB15CW
	RSB18CW
RSB23CW	
Bell Shaped Pebbled Bowls	BSB10
	BSB12
	BSB18
Camwear® Ladles	LD85
	LD85A
	LD105
	LD105A
	LD130

Camwear® Serving Spoons	SPOP10CW
	SPOP11CW
	SPOP13CW
	SPO8CW
	SPO10CW
	SPO11CW
	SPO13CW
Tongs	TG6
	TG9
	6TGS
	9TGS
	12TGS
Camwear® Condiment Jar	CJ80CW
Camwear® Display Covers	RD1200CW
	DD1220CW
	DD1220ECW
	DD1220BECW
	DD1220SCW
	DD1826CW
	RD926CW
	RD1220CW
	RD1220CWH
	RD1826CW
	RD1826CWH
DT1220CW	

Deli Crock Covers	DCC5
	DCC10
Camwear® Trays	1418CW
	1520CW
	1418CWH
	1520CWH
	1418TRCW
	1418CWNS
	1520CWNS
	1418CWNSH
	1520CWNSH
Compartment Trays	10146CW
	14105CW
	10145CW
	1596CW
	915CW
Meal Delivery Trays	9113CW
	9114CW
	911CWC
Separator® Compartment Trays	10146DCW
	10146DCWC
Compartment Trays	1411CW
	853FCW
	853FCWC
Trapezoid Compartment Tray	14187TRCW
Show Fest Display Bowls and Trays	SFG1012CW110
	SFG1015CW110
	SFG1220CW110
	SFG820CW110
	SFT1010CW110
	SFT1212CW110

comply with the legal requirements of the Plastics Regulation (EU) No. 10/2011 and its subsequent amendments, as well as Regulation (EU) No. 2020/1245, ministerial decree 21/03/1973 and its subsequent amendments, decree of the president of the republic n° 777 of 23/08/82, Legislative Decree 29 of 10/02/2017, as well as the Regulation (EU) No. 1935/2004, in the version valid at the time this declaration was issued. In addition, this product is manufactured under the relevant requirements of good manufacturing practices (GMP) Regulation No 2023/2006.

The total migration as well as the specific migrations are below the legal limits when used according to specifications. The test was carried out in accordance with Regulation (EU) No. 10/2011 (Annex V), ministerial decree 21/03/1973 and its subsequent amendments, decree of the president of the republic n° 777 of 23/08/82, Legislative Decree 29 of 10/02/2017.

The materials and raw materials used comply with Regulation (EU) No. 10/2011 and its subsequent amendments, as well as Regulation (EU) No. 2020/1245, ministerial decree 21/03/1973 and its subsequent amendments, decree of the president of the republic n° 777 of 23/08/82, Legislative Decree 29 of 10/02/2017. The use of non-evaluated substances is only carried out if it cannot be avoided.

Unevaluated substances are only used behind a functional barrier (FB). The non-evaluated substances used have been proven not to be "mutagenic", "carcinogenic" or "toxic for reproduction".

"Evaluated substances" are substances that have been evaluated from a toxicological point of view by a recognized institution in Europe such as the European Food Safety Authority (EFSA), the Federal Institute for Risk Assessment (BfR) or comparable institutions and are therefore suitable for use in materials and articles intended to come into contact with foodstuffs within the meaning of Article 1 of Regulation (EC) 1935/2004. The restrictions associated with the use, e.g. application quantity limit, migration restrictions, etc. must be observed.

Evaluated substances are listed in individual measures according to Article 5 of Regulation (EC) 1935/2004 such as Annex 1 of the Plastics Regulation (EU) 10/2011 or listed in national regulations, among other ministerial decree 21/03/1973, decree of the president of the republic n° 777 of 23/08/82, Legislative Decree 29 of 10/02/2017, and recommendations or evaluations are available for the substances in the form of statement from one of the admitted institutions.

Evaluated substances are intentionally used in the manufacture and marketing of materials and articles intended to come in contact with food.

We only carry out changes in composition after consultation and written approval by the customer, which requires the issue of an updated declaration of conformity.

We carefully follow the new publications of the relevant laws and will inform the customer about significant changes in laws and standards that are relevant related to the production and use of the product.

3. Migration and residual contents

The following substances with restrictions and/or specifications are used in the above mentioned products:

Substance Name	Content
Polycarbonate	100%

3.1. Overall migration limit (OM)

The total migration as well as the specific migrations are below the legal limits if applied according to their specification. The test was carried out in accordance with Regulation (EU) No. 10/2011 and EU 2020/1245.

The restrictions for evaluated substances (SML, QM, QMA, ND) in the Union list of Regulation (EU) 10/2011 and Directive 2007/42/EC, are met under the test conditions given above. In the listed TÜV official reports

3.2. Dual-Use-Additive

This product does not contain any substances authorized as food additives in Regulations 1333/2008/EC and 1334/2008/EC.

4. Substance Restriction under EU 10/2011

This product contains substances which have either Specific Migration Limit (SML) and/or Total Specific Migration Limit (SML(T)) and/or QM (residual content) and/or QMA (residual content per food contact surface area) defined in Tables 1-3 of Annex I of EC 10/2011.

The table below provides the components of the product that are restricted under EU 10/2011:

Name	CAS No.
Polycarbonate	25971-63-5

5. Substances of Very High Concern

The requirements of Regulation (EC) No. 1907/2006 (REACH) are fulfilled for all components of the material. It is assured that no substances of very high concern within the meaning of Regulation (EC) No. 1907/2006 are contained. The basis is the currently valid "Candidate List of Substances of Very High Concern" (SVHC list).

6. NIAS (Not intentional added substances)

NIAS are substances introduced unintentionally during the manufacture and marketing of materials and articles intended to come into contact with food, such as impurities in the substances used, reaction intermediates formed during the manufacturing process or degradation or reaction products.

Whether the unintentionally introduced substances comply with Article 3 of Regulation (EC) No 1935/2004 must be assessed in accordance with internationally accepted scientific principles on risk assessment (see Article 19 of Regulation (EU) No 10/2011 - EU 2015/174).

7. Specification of intended use or restrictions

- Type(s) of food or process for which the material is suitable:
 - Cold and warm food
 - Storage of food

No functional barrier made of plastic is used in the above mentioned product.

8. General information

This confirmation applies to the product delivered by us as described; the conformity test was carried out in accordance with the rules of Regulation (EU) No. 10/2011 and its subsequent amendments, as well as Regulation (EU) No. 2020/1245, ministerial decree 21/03/1973 and its subsequent amendments, decree of the president of the republic n° 777 of 23/08/82, Legislative Decree 29 of 10/02/2017, and Regulation (EC) No. 2023/2006 (Good Manufacturing Practice); thereafter, the product meets the specifications if the specified food contact conditions are observed. In case of deviations from the food contact conditions, the user must satisfy himself of the suitability.

It is pointed out that no contact between printing ink and food must occur.

Date: August 29, 2023
Name: Pierre Clemons
Title: Quality Systems Manager

Signature: 

Valid: until revoked by reissue



pH Labs

Att. to:
CAMBRO PRESSWERK KONGEN GMBH
Kelterstrasse 51
UNTERENSINGEN 71669

Refer to:
Dr.ssa Chiara Catervi

Phone/ E-Mail
Chiara.Catervi@tuvsud.com

Phone/ E-Mail
+39 345 6140135

Fax
0558071099

Date
29/08/23

VALIDATION LETTER

The analyses performed by pH Srl – gruppo TÜV SÜD on the sample **64CW135 Clear - Transparent Polycarbonate** as reported on test report 23-FC01305 and on **64CW110 Black - Black Polycarbonate** as reported on test report 23-FC01306,

meet the requirements of Reg. (EC) 1935/04 and Reg. (UE) 10/2011

The results reported in the test reports relate only to the sample analysed, the sampling of which was performed by the Customer under his responsibility

Based on the statement sent to us by the customer, the following articles:

Item Description	Item Number
Divider Bars	DIV12
	DIV20
Camwear®	2SFSCW
	4SFSCW
	6SFSCW
	8SFSCW
	12SFSCW
	18SFSCW
Camsquares® FreshPro Food Storage Containers	22SFSCW
	2SFSPROCW
	4SFSPROCW
	6SFSPROCW
	8SFSPROCW
	12SFSPROCW
18SFSPROCW	
22SFSPROCW	



pH Labs

Camwear® Round Food Storage Containers	RFSCW1
	RFSCW2
	RFSCW4
	RFSCW6
	RFSCW8
	RFSCW12
	RFSCW18
	RFSCW22
Camwear® Food Pans GN 1/1	12CW
	14CW
	16CW
	18CW
	10CWD
Camwear® Food Pans GN 2/4	22LPCW
	24LPCW
	20LPCWD
Camwear® Food Pans GN 1/2	22CW
	24CW
	26CW
	28CW
	20CWD
Camwear® Food Pans GN 1/3	32CW
	34CW
	36CW
	38CW
	30CWD
Camwear® Food Pans GN 1/4	42CW
	44CW
	46CW
	40CWD
Camwear® Food Pans GN 1/6	62CW
	64CW
	66CW
	60CWD
Camwear® Food Pans GN 1/8	82CW
	84CW
	86CW
	80CWD
Camwear® Food Pans GN 1/9	92CW
	94CW
	96PCW
	90CWD
Camwear® Boxes	18263CW
	18266CW



pH Labs

	18269CW
--	---------

Camwear® Boxes	182612CW
	182615CW
	12183CW
	12186CW
	12189CW
Camwear® Covers	RFSCWC1
	RFSCWC2
	RFSCWC6
	RFSCWC12
Camwear® Covers	1826CCW
	1826SCCW
	1218CCW
	1218SCCW
Drain Shelf	1826DSCW
	1218DSCW
Colander	1826CLRCW
	18268CLRCW
	18268CLRKIT
Camwear® Colander Pans GN 1/1	13CLRCW
	15CLRCW
Camwear® Colander Pans GN 1/2	23CLRCW
	25CLRCW
Camwear® Colander Pans GN 1/3	33CLRCW
	35CLRCW
Camwear® Colander Pans GN 1/6	63CLRCW
	65CLRCW
Camwear® Lids GN 1/1	10CWC
	10CWCH
	10CWCHN
	10CWGL
Camwear® Lids GN 2/4	20LPCWC
Camwear® Lids GN 1/2	20CWC
	20CWCH
	20CWCHN
	20CWL
	20CWLN
	20CWGL
Camwear® Lids GN 1/3	30CWC
	30CWCH
	30CWCHN
	30CWL
	30CWLN
	30CWGL



pH Labs

Camwear® Lids GN 1/4	40CWC
	40CWCH
	40CWCHN
Camwear® Lids GN 1/6	60CWC
	60CWCH
	60CWCHN
	60CWL
	60CWLN
	60CWGL
Camwear® Lids GN 1/8	80CWC
	80CWCH
	80CWCHN
Camwear® Lids GN 1/9	90CWC
	90CWCN
	90CWL
	90CWLN
Camwear® Dry Scoops	SCP6CW
	SCP12CW
	SCP24CW
	SCP64CW
Camwear® Polycarbonate Measuring Cups	25MCCW
	50MCCW
	100MCCW
	200MCCW
	400MCCW
Camwear® Huntington Tumblers	HT5CW
	HT8CW
	HT10CW
	HT120CW
	HT12CW
	HT14CW
	HT16CW
	HT22CW
Camwear® Tumblers	500CW
	800CW
	850CW
	950CW
	1200CW
	1600CW
Pitchers	P320CW
	P34CW
	P480CW
	P600CW
	P60CW
	P64CW



pH Labs

	PC64CW
	PE600CW
	PL60CW
Swirl Bowls	SRB5CW
	SRB13CW
Pebbled Pedestal Punch Bowls	PPB15
	PPB18
	PPB23
Dinnerware	90SPCW
	120CWP
	93CW
	HK93BCW
	10CWNR
	9CWNR
	825CWNR
	725CWNR
	65CWNR
	55CWNR
	10CW
Dinnerware	10CWL
	35CW
	45CW
	50CW
	60CW
	100CW
	150CW
	75CW
	96CW
	HK93CW
Camwear® Camcovers	806CW
	900CW
	901CW
	905CW
	909CW
	9011CW
	9013CW
	1000CW
	1005CW
	1007CW
	1013CW
	1101CW
	1202CW
	MDCPC9CW
Bud Vase	BV6CW
Round Pebbled Bowls	PSB6
	PSB8



pH Labs

	PSB10
	PSB12
	PSB15
	PSB18
	PSB23
Rectangular Ribbed Bowls	RSB912CW
	RSB1014CW
	RSB1419CW
Round Ribbed Bowls	RSB6CW
	RSB8CW
	RSB10CW
	RSB12CW
	RSB15CW
	RSB18CW
	RSB23CW
Bell Shaped Pebbled Bowls	BSB10
	BSB12
	BSB18
Camwear® Ladles	LD85
	LD85A
	LD105
	LD105A
	LD130
Camwear® Serving Spoons	SPOP10CW
	SPOP11CW
	SPOP13CW
	SPO8CW
	SPO10CW
	SPO11CW
	SPO13CW
Tongs	TG6
	TG9
	6TGS
	9TGS
	12TGS
Camwear® Condiment Jar	CJ80CW
Camwear® Display Covers	RD1200CW
	DD1220CW
	DD1220ECW
	DD1220BECW
	DD1220SCW
	DD1826CW
	RD926CW
	RD1220CW
	RD1220CWH



pH Labs

	RD1826CW
	RD1826CWH
	DT1220CW
Deli Crock Covers	DCC5
	DCC10
Camwear® Trays	1418CW
	1520CW
	1418CWH
	1520CWH
	1418TRCW
	1418CWNS
	1520CWNS
	1418CWNSH
	1520CWNSH
Compartment Trays	10146CW
	14105CW
	10145CW
	1596CW
	915CW
Meal Delivery Trays	9113CW
	9114CW
	911CWC
Separator® Compartment Trays	10146DCW
	10146DCWC
Compartment Trays	1411CW
	853FCW
	853FCWC
Trapezoid Compartment Tray	14187TRCW
Show Fest Display Bowls and Trays	SFG1012CW110
	SFG1015CW110
	SFG1220CW110
	SFG820CW110
	SFT1010CW110
	SFT1212CW110

are made with the same raw material and with the same production process; based on this statement and based on study on sample (which it is the "worst case" for the "surface-volume ratio" parameter), the listed products could referred to test report No. 23-FC01305; 23-FC01306 and should meet the requirements of Reg. 1935/04 and Reg.10/2011 in relation to the analyses performed.



pH Labs



LAB N° 0069 L

TEST REPORT

N° 23-FC01305

Sample identification number: 23-FC01305
 (C) Sample description: 64CW135 Clear - Transparent Polycarbonate
 (C) Sampled by: Customer (§)
 (C) Customer: CAMBRO PRESSWERK KONGEN GMBH
 Kelterstrasse 51
 UNTERENSINGEN 72669
 Arrival date: 21/06/2023

RESULTS

Test Method	Chemical parameters	Results	unc	u.m.	LOQ	Limits	o.u.	Note	Start date	End date
* Time and temperature at first, second, third attack										
* Time		4.0		hour					21/06	21/06
* Temperature		100		°C					21/06	21/06
Bisphenol A (2,2-Bis(4-hydroxyphenyl)propane) specific migration in ethanol 95% at first attack <small>UNI EN 13130-1:2005 + UNI CEN/TS 13130-13:2005</small>		< 0.01		mg/kg	0.01		0_A		21/06	13/07
Bisphenol A (2,2-Bis(4-hydroxyphenyl)propane) specific migration in ethanol 95% at second attack <small>UNI EN 13130-1:2005 + UNI CEN/TS 13130-13:2005</small>		< 0.01		mg/kg	0.01		0_A		21/06	13/07
Bisphenol A (2,2-Bis(4-hydroxyphenyl)propane) specific migration in ethanol 95% at third attack <small>UNI EN 13130-1:2005 + UNI CEN/TS 13130-13:2005</small>		< 0.01		mg/kg	0.01	0.05	0_A		21/06	13/07
Overall migration in acetic acid 3% by filling at first attack <small>UNI EN 1186-1:2003 + UNI EN 1186-9:2003</small>		1.00	±0.43	mg/dm ²	0.5		0_A		21/06	11/07
Reply A at first attack		1.00		mg/dm ²	0.5				21/06	11/07
Reply B at first attack		1.50		mg/dm ²	0.5				21/06	11/07
Reply C at first attack		1.00		mg/dm ²	0.5				21/06	11/07
Overall migration in acetic acid 3% by filling at second attack <small>UNI EN 1186-1:2003 + UNI EN 1186-9:2003</small>		0.50	±0.21	mg/dm ²	0.5		0_A		21/06	11/07
Reply A at second attack		0.50		mg/dm ²	0.5				21/06	11/07
Reply B at second attack		1.00		mg/dm ²	0.5				21/06	11/07
Reply C at second attack		< 0.5		mg/dm ²	0.5				21/06	11/07
Overall migration in acetic acid 3% by filling at third attack <small>UNI EN 1186-1:2003 + UNI EN 1186-9:2003</small>		0.50	±0.21	mg/dm ²	0.5	10	0_A		21/06	18/07
Reply A at third attack		1.00		mg/dm ²	0.5				21/06	18/07
Reply B at third attack		1.00		mg/dm ²	0.5				21/06	18/07
Reply C at third attack		< 0.5		mg/dm ²	0.5				21/06	18/07

This test report shall not be reproduced except in full, without written approval of the laboratory. The original test report is supplied in digital form and digitally signed by the authorised responsible (file 23-FC01305.p7m). Printed copy of the mentioned original digital test report has no legal value.

Format Report: FC06.01 rev.10 of 17/07/2023

Page 1 of 10

P.H. s.r.l. Società unipersonale soggetta al controllo e al coordinamento di TÜV SÜD AG
 - Sede legale e Laboratorio Alimenti: Via Sangallo, 29 50028 Barberino Tavarnelle (FI)
 - Uffici e Laboratorio Ambiente: Via Bramante, 10/12 50028 Barberino Tavarnelle (FI)
 - Laboratorio Ambiente: Z.I. Tito Scalo 85050 Tito (PZ)

mailto: PHLabs@tuvsud.com web: www.tuv.it/ph
 telefono: +39 055 80961 fax: +39 055 8071099
 telefono: +39 055 80677 fax: +39 055 8067850
 telefono: +39 0971 485795 fax: +39 0971 485795



pH Labs



LAB N° 0069 L

N° 23-FC01305

Test Method	Chemical parameters	Results	unc	u.m.	LOQ	Limits	o.u.	Note	Start date	End date
Overall migration in ethanol 10% by filling at first attack <i>UNI EN 1186-1:2003 + UNI EN 1186-9:2003</i>		1.00	±0.43	mg/dm ²	0.5		0_A		21/06	18/07
Reply A first attack		1.00		mg/dm ²	0.5				21/06	18/07
Reply B first attack		0.50		mg/dm ²	0.5				21/06	18/07
Reply C first attack		1.00		mg/dm ²	0.5				21/06	18/07
Overall migration in ethanol 10% by filling at second attack <i>UNI EN 1186-1:2003 + UNI EN 1186-9:2003</i>		0.50	±0.21	mg/dm ²	0.5		0_A		21/06	18/07
Reply A second attack		0.50		mg/dm ²	0.5				21/06	18/07
Reply B second attack		1.00		mg/dm ²	0.5				21/06	18/07
Reply C second attack		< 0.5		mg/dm ²	0.5				21/06	18/07
Overall migration in ethanol 10% by filling at third attack <i>UNI EN 1186-1:2003 + UNI EN 1186-9:2003</i>		0.50	±0.21	mg/dm ²	0.5	10	0_A		21/06	18/07
Reply A third attack		0.50		mg/dm ²	0.5				21/06	18/07
Reply B third attack		0.50		mg/dm ²	0.5				21/06	18/07
Reply C third attack		0.50		mg/dm ²	0.5				21/06	18/07
* Overall migration in olive oil at third attack by filling <i>UNI EN 1186-1:2003 + UNI EN 1186-2:2003</i>		< 0.5		mg/dm ²	0.5	10	0_A		21/06	04/08
* Overall migration in oil at first attack, Average M1		2.00		mg/dm ²	0.5				21/06	04/08
* Reply A at first attack		2.50		mg/dm ²	0.5				21/06	04/08
* Reply B at first attack		2.00		mg/dm ²	0.5				21/06	04/08
* Reply C at first attack		1.00		mg/dm ²	0.5				21/06	04/08
* Overall migration in oil at second attack, Average M2		< 0.5		mg/dm ²	0.5				21/06	04/08
* Reply A at second attack		< 0.5		mg/dm ²	0.5				21/06	04/08
* Reply B at second attack		< 0.5		mg/dm ²	0.5				21/06	04/08
* Reply C at second attack		0.50		mg/dm ²	0.5				21/06	04/08
* Overall migration in oil at third attack, Average M3		1.00		mg/dm ²	0.5				21/06	04/08
* Reply A at third attack		2.00		mg/dm ²	0.5				21/06	04/08
* Reply B at third attack		< 0.5		mg/dm ²	0.5				21/06	04/08
* Reply C at third attack		1.00		mg/dm ²	0.5				21/06	04/08
* Reply D at third attack		2.50		mg/dm ²	0.5				21/06	04/08

This test report shall not be reproduced except in full, without written approval of the laboratory. The original test report is supplied in digital form and digitally signed by the authorised responsible (file 23-FC01305.p7m). Printed copy of the mentioned original digital test report has no legal value.

Format Report: FC06.01 rev.10 of 17/07/2023

Page 2 of 10



pH Labs



LAB N° 0069 L

N° 23-FC01305

Test Method	Chemical parameters	Results	unc	u.m.	LOQ	Limits	o.u.	Note	Start date	End date
19 METALS SPECIFIC MIGRATION IN ACETIC ACID 3% at first, second and third attack <i>UNI EN 13130-1:2005 + EPA 6010D 2018</i>							0_A			
Aluminum at first attack <i>UNI EN 13130-1:2005 + EPA 6010D 2018</i>		< 0.1		mg/kg	0.1	1	0_A		21/06	10/07
Aluminum at second attack <i>UNI EN 13130-1:2005 + EPA 6010D 2018</i>		< 0.1		mg/kg	0.1	1	0_A		21/06	10/07
Aluminum at third attack <i>UNI EN 13130-1:2005 + EPA 6010D 2018</i>		< 0.1		mg/kg	0.1	1	0_A		21/06	10/07
* Antimony at first attack <i>UNI EN 13130-1:2005 + EPA 6010D 2018</i>		< 0.01		mg/kg	0.01	0.04	0_A		21/06	11/07
* Antimony at second attack <i>UNI EN 13130-1:2005 + EPA 6010D 2018</i>		< 0.01		mg/kg	0.01	0.04	0_A		21/06	11/07
* Antimony at third attack <i>UNI EN 13130-1:2005 + EPA 6010D 2018</i>		< 0.01		mg/kg	0.01	0.04	0_A		21/06	12/07
* Arsenic at first attack <i>UNI EN 13130-1:2005 + EPA 6010D 2018</i>		< 0.01		mg/kg	0.01	0.01	0_A		21/06	11/07
* Arsenic at second attack <i>UNI EN 13130-1:2005 + EPA 6010D 2018</i>		< 0.01		mg/kg	0.01	0.01	0_A		21/06	11/07
* Arsenic at third attack <i>UNI EN 13130-1:2005 + EPA 6010D 2018</i>		< 0.01		mg/kg	0.01	0.01	0_A		21/06	12/07
Barium at first attack <i>UNI EN 13130-1:2005 + EPA 6010D 2018</i>		< 0.1		mg/kg	0.1	1	0_A		21/06	10/07
Barium at second attack <i>UNI EN 13130-1:2005 + EPA 6010D 2018</i>		< 0.1		mg/kg	0.1	1	0_A		21/06	10/07
Barium at third attack <i>UNI EN 13130-1:2005 + EPA 6010D 2018</i>		< 0.1		mg/kg	0.1	1	0_A		21/06	18/07
* Cadmium at first attack <i>UNI EN 13130-1:2005 + EPA 6010D 2018</i>		< 0.002		mg/kg	0.002	0.002	0_A		21/06	11/07
* Cadmium at second attack <i>UNI EN 13130-1:2005 + EPA 6010D 2018</i>		< 0.002		mg/kg	0.002	0.002	0_A		21/06	11/07
* Cadmium at third attack <i>UNI EN 13130-1:2005 + EPA 6010D 2018</i>		< 0.002		mg/kg	0.002	0.002	0_A		21/06	12/07
Cobalt at first attack <i>UNI EN 13130-1:2005 + EPA 6010D 2018</i>		< 0.01		mg/kg	0.01	0.05	0_A		21/06	10/07
Cobalt at second attack <i>UNI EN 13130-1:2005 + EPA 6010D 2018</i>		< 0.01		mg/kg	0.01	0.05	0_A		21/06	10/07
Cobalt at third attack <i>UNI EN 13130-1:2005 + EPA 6010D 2018</i>		< 0.01		mg/kg	0.01	0.05	0_A		21/06	18/07
* Chromium at first attack <i>UNI EN 13130-1:2005 + EPA 6010D 2018</i>		< 0.01		mg/kg	0.01	0.01	0_A		21/06	10/07
* Chromium at second attack <i>UNI EN 13130-1:2005 + EPA 6010D 2018</i>		< 0.01		mg/kg	0.01	0.01	0_A		21/06	10/07
* Chromium at third attack <i>UNI EN 13130-1:2005 + EPA 6010D 2018</i>		< 0.01		mg/kg	0.01	0.01	0_A		21/06	18/07
* Europium at first attack <i>UNI EN 13130-1:2005 + EPA 6010D 2018</i>		< 0.01		mg/kg	0.01	0.05	0_A		21/06	10/07
* Europium at second attack <i>UNI EN 13130-1:2005 + EPA 6010D 2018</i>		< 0.01		mg/kg	0.01	0.05	0_A		21/06	10/07
* Europium at third attack <i>UNI EN 13130-1:2005 + EPA 6010D 2018</i>		< 0.01		mg/kg	0.01	0.05	0_A		21/06	18/07
Iron at first attack <i>UNI EN 13130-1:2005 + EPA 6010D 2018</i>		< 0.1		mg/kg	0.1	48	0_A		21/06	10/07
Iron at second attack <i>UNI EN 13130-1:2005 + EPA 6010D 2018</i>		< 0.1		mg/kg	0.1	48	0_A		21/06	10/07

This test report shall not be reproduced except in full, without written approval of the laboratory. The original test report is supplied in digital form and digitally signed by the authorised responsible (file 23-FC01305.p7m). Printed copy of the mentioned original digital test report has no legal value.

Format Report: FC06.01 rev.10 of 17/07/2023

Page 3 of 10

P.H. s.r.l. Società unipersonale soggetta al controllo e al coordinamento di TÜV SÜD AG
 - Sede legale e Laboratorio Alimenti: Via Sangallo, 29 50028 Barberino Tavarnelle (FI)
 - Uffici e Laboratorio Ambiente: Via Bramante, 10/12 50028 Barberino Tavarnelle (FI)
 - Laboratorio Ambiente: Z.I. Tito Scalo 85050 Tito (PZ)

mailto: PHLabs@tuvsud.com web: www.tuv.it/ph
 telefono: +39 055 80961 fax: +39 055 8071099
 telefono: +39 055 80677 fax: +39 055 8067850
 telefono: +39 0971 485795 fax: +39 0971 485795



pH Labs



LAB N° 0069 L

N° 23-FC01305

Test Method	Chemical parameters	Results	unc	u.m.	LOQ	Limits	o.u.	Note	Start date	End date
Iron at third attack <i>UNI EN 13130-1:2005 + EPA 6010D 2018</i>		< 0.1		mg/kg	0.1	48	0_A		21/06	18/07
* Gadolinium at first attack <i>UNI EN 13130-1:2005 + EPA 6010D 2018</i>		< 0.01		mg/kg	0.01	0.05	0_A		21/06	10/07
* Gadolinium at second attack <i>UNI EN 13130-1:2005 + EPA 6010D 2018</i>		< 0.01		mg/kg	0.01	0.05	0_A		21/06	10/07
* Gadolinium at third attack <i>UNI EN 13130-1:2005 + EPA 6010D 2018</i>		< 0.01		mg/kg	0.01	0.05	0_A		21/06	18/07
* Lanthanum at first attack <i>UNI EN 13130-1:2005 + EPA 6010D 2018</i>		< 0.01		mg/kg	0.01	0.05	0_A		21/06	10/07
* Lanthanum at second attack <i>UNI EN 13130-1:2005 + EPA 6010D 2018</i>		< 0.01		mg/kg	0.01	0.05	0_A		21/06	10/07
* Lanthanum at third attack <i>UNI EN 13130-1:2005 + EPA 6010D 2018</i>		< 0.01		mg/kg	0.01	0.05	0_A		21/06	18/07
Lithium at first attack <i>UNI EN 13130-1:2005 + EPA 6010D 2018</i>		< 0.1		mg/kg	0.1	0.6	0_A		21/06	10/07
Lithium at second attack <i>UNI EN 13130-1:2005 + EPA 6010D 2018</i>		< 0.1		mg/kg	0.1	0.6	0_A		21/06	10/07
Lithium at third attack <i>UNI EN 13130-1:2005 + EPA 6010D 2018</i>		< 0.1		mg/kg	0.1	0.6	0_A		21/06	18/07
Manganese at first attack <i>UNI EN 13130-1:2005 + EPA 6010D 2018</i>		< 0.05		mg/kg	0.05	0.6	0_A		21/06	10/07
Manganese at second attack <i>UNI EN 13130-1:2005 + EPA 6010D 2018</i>		< 0.05		mg/kg	0.05	0.6	0_A		21/06	10/07
Manganese at third attack <i>UNI EN 13130-1:2005 + EPA 6010D 2018</i>		< 0.05		mg/kg	0.05	0.6	0_A		21/06	18/07
* Mercury at first attack <i>UNI EN 13130-1:2005 + EPA 6010D 2018</i>		< 0.005		mg/kg	0.005	0.01	0_A		21/06	11/07
* Mercury at second attack <i>UNI EN 13130-1:2005 + EPA 6010D 2018</i>		< 0.005		mg/kg	0.005	0.01	0_A		21/06	11/07
* Mercury at third attack <i>UNI EN 13130-1:2005 + EPA 6010D 2018</i>		< 0.005		mg/kg	0.005	0.01	0_A		21/06	12/07
Nickel at first attack <i>UNI EN 13130-1:2005 + EPA 6010D 2018</i>		< 0.01		mg/kg	0.01	0.02	0_A		21/06	10/07
Nickel at second attack <i>UNI EN 13130-1:2005 + EPA 6010D 2018</i>		< 0.01		mg/kg	0.01	0.02	0_A		21/06	10/07
Nickel at third attack <i>UNI EN 13130-1:2005 + EPA 6010D 2018</i>		< 0.01		mg/kg	0.01	0.02	0_A		21/06	18/07
* Lead at first attack <i>UNI EN 13130-1:2005 + EPA 6010D 2018</i>		< 0.01		mg/kg	0.01	0.01	0_A		21/06	11/07
* Lead at second attack <i>UNI EN 13130-1:2005 + EPA 6010D 2018</i>		< 0.01		mg/kg	0.01	0.01	0_A		21/06	11/07
* Lead at third attack <i>UNI EN 13130-1:2005 + EPA 6010D 2018</i>		< 0.01		mg/kg	0.01	0.01	0_A		21/06	12/07
Copper at first attack <i>UNI EN 13130-1:2005 + EPA 6010D 2018</i>		< 0.1		mg/kg	0.1	5	0_A		21/06	10/07
Copper at second attack <i>UNI EN 13130-1:2005 + EPA 6010D 2018</i>		< 0.1		mg/kg	0.1	5	0_A		21/06	10/07
Copper at third attack <i>UNI EN 13130-1:2005 + EPA 6010D 2018</i>		< 0.1		mg/kg	0.1	5	0_A		21/06	18/07
* Sum of lanthanides (Eu+Gd+La+Tb) at first attack <i>UNI EN 13130-1:2005 + EPA 6010D 2018</i>		< 0.01		mg/kg	0.01	0.05	0_A		21/06	10/07
* Sum of lanthanides (Eu+Gd+La+Tb) at second attack <i>UNI EN 13130-1:2005 + EPA 6010D 2018</i>		< 0.01		mg/kg	0.01	0.05	0_A		21/06	10/07

This test report shall not be reproduced except in full, without written approval of the laboratory. The original test report is supplied in digital form and digitally signed by the authorised responsible (file 23-FC01305.p7m). Printed copy of the mentioned original digital test report has no legal value.

Format Report: FC06.01 rev.10 of 17/07/2023

Page 4 of 10

P.H. s.r.l. Società unipersonale soggetta al controllo e al coordinamento di TÜV SÜD AG
 - Sede legale e Laboratorio Alimenti: Via Sangallo, 29 50028 Barberino Tavarnelle (FI)
 - Uffici e Laboratorio Ambiente: Via Bramante, 10/12 50028 Barberino Tavarnelle (FI)
 - Laboratorio Ambiente: Z.I. Tito Scalo 85050 Tito (PZ)

mailto: PHLabs@tuvsud.com web: www.tuv.it/ph
 telefono: +39 055 80981 fax: +39 055 8071099
 telefono: +39 055 80677 fax: +39 055 8067850
 telefono: +39 0971 485795 fax: +39 0971 485795



pH Labs



LAB N° 0069 L

N° 23-FC01305

Test Method	Chemical parameters	Results	unc	u.m.	LOQ	Limits	o.u.	Note	Start date	End date
* Sum of lanthanides (Eu+Gd+La+Tb) at third attack <i>UNI EN 13130-1:2005 + EPA 6010D 2018</i>		< 0.01		mg/kg	0.01	0.05	0_A		21/06	18/07
* Terbium at first attack <i>UNI EN 13130-1:2005 + EPA 6010D 2018</i>		< 0.01		mg/kg	0.01	0.05	0_A		21/06	10/07
* Terbium at second attack <i>UNI EN 13130-1:2005 + EPA 6010D 2018</i>		< 0.01		mg/kg	0.01	0.05	0_A		21/06	10/07
* Terbium at third attack <i>UNI EN 13130-1:2005 + EPA 6010D 2018</i>		< 0.01		mg/kg	0.01	0.05	0_A		21/06	18/07
Zinc at first attack <i>UNI EN 13130-1:2005 + EPA 6010D 2018</i>		< 0.1		mg/kg	0.1	5	0_A		21/06	10/07
Zinc at second attack <i>UNI EN 13130-1:2005 + EPA 6010D 2018</i>		< 0.1		mg/kg	0.1	5	0_A		21/06	10/07
Zinc at third attack <i>UNI EN 13130-1:2005 + EPA 6010D 2018</i>		< 0.1		mg/kg	0.1	5	0_A		21/06	18/07
Specific migration of PAA Reg. 10/2011 Annex II at first, second and third attack in 3% acetic acid <i>UNI EN 13130-1:2005 + JRC-IHCP EU RL-FCM Aromatic amines Protocol A Ed.1 2011</i>		-					0_A			
* 2,2'-dichloro-4,4'-methylenedianiline at first attack <i>UNI EN 13130-1:2005 + JRC-IHCP EU RL-FCM Aromatic amines Protocol A Ed.1 2011</i>		< 0.001		mg/kg	0.001	0.002	0_A		21/06	12/07
* 2,2'-dichloro-4,4'-methylenedianiline at second attack <i>UNI EN 13130-1:2005 + JRC-IHCP EU RL-FCM Aromatic amines Protocol A Ed.1 2011</i>		< 0.001		mg/kg	0.001	0.002	0_A		21/06	12/07
* 2,2'-dichloro-4,4'-methylenedianiline at third attack <i>UNI EN 13130-1:2005 + JRC-IHCP EU RL-FCM Aromatic amines Protocol A Ed.1 2011</i>		< 0.001		mg/kg	0.001	0.002	0_A		21/06	12/07
4,4-Methylenedianiline at first attack <i>UNI EN 13130-1:2005 + JRC-IHCP EU RL-FCM Aromatic amines Protocol A Ed.1 2011</i>		< 0.001		mg/kg	0.001	0.002	0_A		21/06	12/07
4,4-Methylenedianiline at second attack <i>UNI EN 13130-1:2005 + JRC-IHCP EU RL-FCM Aromatic amines Protocol A Ed.1 2011</i>		< 0.001		mg/kg	0.001	0.002	0_A		21/06	12/07
4,4-Methylenedianiline at third attack <i>UNI EN 13130-1:2005 + JRC-IHCP EU RL-FCM Aromatic amines Protocol A Ed.1 2011</i>		< 0.001		mg/kg	0.001	0.002	0_A		21/06	12/07
4,4-Diaminodiphenylether at first attack <i>UNI EN 13130-1:2005 + JRC-IHCP EU RL-FCM Aromatic amines Protocol A Ed.1 2011</i>		< 0.001		mg/kg	0.001	0.002	0_A		21/06	12/07
4,4-Diaminodiphenylether at second attack <i>UNI EN 13130-1:2005 + JRC-IHCP EU RL-FCM Aromatic amines Protocol A Ed.1 2011</i>		< 0.001		mg/kg	0.001	0.002	0_A		21/06	12/07
4,4-Diaminodiphenylether at third attack <i>UNI EN 13130-1:2005 + JRC-IHCP EU RL-FCM Aromatic amines Protocol A Ed.1 2011</i>		< 0.001		mg/kg	0.001	0.002	0_A		21/06	12/07
4-Chloro-Aniline at first attack <i>UNI EN 13130-1:2005 + JRC-IHCP EU RL-FCM Aromatic amines Protocol A Ed.1 2011</i>		< 0.001		mg/kg	0.001	0.002	0_A		21/06	12/07
4-Chloro-Aniline at second attack <i>UNI EN 13130-1:2005 + JRC-IHCP EU RL-FCM Aromatic amines Protocol A Ed.1 2011</i>		< 0.001		mg/kg	0.001	0.002	0_A		21/06	12/07
4-Chloro-Aniline at third attack <i>UNI EN 13130-1:2005 + JRC-IHCP EU RL-FCM Aromatic amines Protocol A Ed.1 2011</i>		< 0.001		mg/kg	0.001	0.002	0_A		21/06	12/07
Phenyldiamine at first attack <i>UNI EN 13130-1:2005 + JRC-IHCP EU RL-FCM Aromatic amines Protocol A Ed.1 2011</i>		< 0.002		mg/kg	0.002		0_A		21/06	12/07
Phenyldiamine at second attack <i>UNI EN 13130-1:2005 + JRC-IHCP EU RL-FCM Aromatic amines Protocol A Ed.1 2011</i>		< 0.002		mg/kg	0.002		0_A		21/06	12/07

This test report shall not be reproduced except in full, without written approval of the laboratory. The original test report is supplied in digital form and digitally signed by the authorised responsible (file 23-FC01305.p7m). Printed copy of the mentioned original digital test report has no legal value.

Format Report: FC06.01 rev.10 of 17/07/2023

Page 5 of 10

P.H. s.r.l. Società unipersonale soggetta al controllo e al coordinamento di TÜV SÜD AG
 - Sede legale e Laboratorio Alimenti: Via Sangallo, 29 50028 Barberino Tavarnelle (FI)
 - Uffici e Laboratorio Ambiente: Via Bramante, 10/12 50028 Barberino Tavarnelle (FI)
 - Laboratorio Ambiente: Z.I. Tito Scalo 80500 Tito (PZ)

mailto:PHLabs@tuvsud.com web: www.tuv.it/ph
 telefono: +39 055 80961 fax: +39 055 8071099
 telefono: +39 055 80677 fax: +39 055 8067850
 telefono: +39 0971 485795 fax: +39 0971 485795



pH Labs



LAB N° 0069 L

N° 23-FC01305

Test Method	Chemical parameters	Results	unc	u.m.	LOQ	Limits	o.u.	Note	Start date	End date
	Phenylendiamine at third attack <i>UNI EN 13130-1:2005 + JRC-IHCP EU RL-FCM Aromatic amines Protocol A Ed.1 2011</i>	< 0.002		mg/kg	0.002		0_A		21/06	12/07
*	3,3'-Dimethoxybenzidine o-Dianisidine at first attack <i>UNI EN 13130-1:2005 + JRC-IHCP EU RL-FCM Aromatic amines Protocol A Ed.1 2011</i>	< 0.001		mg/kg	0.001	0.002	0_A		21/06	12/07
*	3,3'-Dimethoxybenzidine o-Dianisidine at second attack <i>UNI EN 13130-1:2005 + JRC-IHCP EU RL-FCM Aromatic amines Protocol A Ed.1 2011</i>	< 0.001		mg/kg	0.001	0.002	0_A		21/06	12/07
*	3,3'-Dimethoxybenzidine o-Dianisidine at third attack <i>UNI EN 13130-1:2005 + JRC-IHCP EU RL-FCM Aromatic amines Protocol A Ed.1 2011</i>	< 0.001		mg/kg	0.001	0.002	0_A		21/06	12/07
	3,3-Dimethylbenzidine at first attack <i>UNI EN 13130-1:2005 + JRC-IHCP EU RL-FCM Aromatic amines Protocol A Ed.1 2011</i>	< 0.001		mg/kg	0.001	0.002	0_A		21/06	12/07
	3,3-Dimethylbenzidine at second attack <i>UNI EN 13130-1:2005 + JRC-IHCP EU RL-FCM Aromatic amines Protocol A Ed.1 2011</i>	< 0.001		mg/kg	0.001	0.002	0_A		21/06	12/07
	3,3-Dimethylbenzidine at third attack <i>UNI EN 13130-1:2005 + JRC-IHCP EU RL-FCM Aromatic amines Protocol A Ed.1 2011</i>	< 0.001		mg/kg	0.001	0.002	0_A		21/06	12/07
	2-Methoxy-5-Methylaniline at first attack <i>UNI EN 13130-1:2005 + JRC-IHCP EU RL-FCM Aromatic amines Protocol A Ed.1 2011</i>	< 0.001		mg/kg	0.001	0.002	0_A		21/06	12/07
	2-Methoxy-5-Methylaniline at second attack <i>UNI EN 13130-1:2005 + JRC-IHCP EU RL-FCM Aromatic amines Protocol A Ed.1 2011</i>	< 0.001		mg/kg	0.001	0.002	0_A		21/06	12/07
	2-Methoxy-5-Methylaniline at third attack <i>UNI EN 13130-1:2005 + JRC-IHCP EU RL-FCM Aromatic amines Protocol A Ed.1 2011</i>	< 0.001		mg/kg	0.001	0.002	0_A		21/06	12/07
	2,4,5-Trimethylaniline at first attack <i>UNI EN 13130-1:2005 + JRC-IHCP EU RL-FCM Aromatic amines Protocol A Ed.1 2011</i>	< 0.001		mg/kg	0.001	0.002	0_A		21/06	12/07
	2,4,5-Trimethylaniline at second attack <i>UNI EN 13130-1:2005 + JRC-IHCP EU RL-FCM Aromatic amines Protocol A Ed.1 2011</i>	< 0.001		mg/kg	0.001	0.002	0_A		21/06	12/07
	2,4,5-Trimethylaniline at third attack <i>UNI EN 13130-1:2005 + JRC-IHCP EU RL-FCM Aromatic amines Protocol A Ed.1 2011</i>	< 0.001		mg/kg	0.001	0.002	0_A		21/06	12/07
*	4,4'-thiodianiline at first attack <i>UNI EN 13130-1:2005 + JRC-IHCP EU RL-FCM Aromatic amines Protocol A Ed.1 2011</i>	< 0.001		mg/kg	0.001	0.002	0_A		21/06	12/07
*	4,4'-thiodianiline at second attack <i>UNI EN 13130-1:2005 + JRC-IHCP EU RL-FCM Aromatic amines Protocol A Ed.1 2011</i>	< 0.001		mg/kg	0.001	0.002	0_A		21/06	12/07
*	4,4'-thiodianiline at third attack <i>UNI EN 13130-1:2005 + JRC-IHCP EU RL-FCM Aromatic amines Protocol A Ed.1 2011</i>	< 0.001		mg/kg	0.001	0.002	0_A		21/06	12/07
*	4-Aminoazobenzene at first attack <i>UNI EN 13130-1:2005 + JRC-IHCP EU RL-FCM Aromatic amines Protocol A Ed.1 2011</i>	< 0.001		mg/kg	0.001	0.002	0_A		21/06	12/07
*	4-Aminoazobenzene at second attack <i>UNI EN 13130-1:2005 + JRC-IHCP EU RL-FCM Aromatic amines Protocol A Ed.1 2011</i>	< 0.001		mg/kg	0.001	0.002	0_A		21/06	12/07
*	4-Aminoazobenzene at third attack <i>UNI EN 13130-1:2005 + JRC-IHCP EU RL-FCM Aromatic amines Protocol A Ed.1 2011</i>	< 0.001		mg/kg	0.001	0.002	0_A		21/06	12/07
	4-Methoxy-m-phenylenediamine at first attack <i>UNI EN 13130-1:2005 + JRC-IHCP EU RL-FCM Aromatic amines Protocol A Ed.1 2011</i>	< 0.001		mg/kg	0.001	0.002	0_A		21/06	12/07

This test report shall not be reproduced except in full, without written approval of the laboratory. The original test report is supplied in digital form and digitally signed by the authorised responsible (file 23-FC01305.p7m). Printed copy of the mentioned original digital test report has no legal value.

Format Report: FC06.01 rev.10 of 17/07/2023

Page 6 of 10

P.H. s.r.l. Società unipersonale soggetta al controllo e al coordinamento di TÜV SÜD AG
 - Sede legale e Laboratorio Alimenti: Via Sangallo, 29 50028 Barberino Tavarnelle (FI)
 - Uffici e Laboratorio Ambiente: Via Bramante, 10/12 50028 Barberino Tavarnelle (FI)
 - Laboratorio Ambiente: Z.I. Tito Scalo 85050 Tito (PZ)

mailto: PHLabs@tuvsud.com web: www.tuv.it/ph
 telefono: +39 055 80961 fax: +39 055 8071099
 telefono: +39 055 80677 fax: +39 055 8067850
 telefono: +39 0971 485795 fax: +39 0971 485795



pH Labs



LAB N° 0069 L

N° 23-FC01305

Test Method	Chemical parameters	Results	unc	u.m.	LOQ	Limits	o.u.	Note	Start date	End date
4-Methoxy-m-phenylenediamine at second attack 2011		< 0.001		mg/kg	0.001	0.002	0_A		21/06	12/07
4-Methoxy-m-phenylenediamine at third attack UNI EN 13130-1:2005 + JRC-IHCP EU RL-FCM Aromatic amines Protocol A Ed.1 2011		< 0.001		mg/kg	0.001	0.002	0_A		21/06	12/07
Aniline at first attack UNI EN 13130-1:2005 + JRC-IHCP EU RL-FCM Aromatic amines Protocol A Ed.1 2011		< 0.001		mg/kg	0.001		0_A		21/06	12/07
Aniline at second attack UNI EN 13130-1:2005 + JRC-IHCP EU RL-FCM Aromatic amines Protocol A Ed.1 2011		< 0.001		mg/kg	0.001		0_A		21/06	12/07
Aniline at third attack UNI EN 13130-1:2005 + JRC-IHCP EU RL-FCM Aromatic amines Protocol A Ed.1 2011		< 0.001		mg/kg	0.001		0_A		21/06	12/07
2,6-Toluenediamine at first attack UNI EN 13130-1:2005 + JRC-IHCP EU RL-FCM Aromatic amines Protocol A Ed.1 2011		< 0.001		mg/kg	0.001		0_A		21/06	12/07
2,6-Toluenediamine at second attack UNI EN 13130-1:2005 + JRC-IHCP EU RL-FCM Aromatic amines Protocol A Ed.1 2011		< 0.001		mg/kg	0.001		0_A		21/06	12/07
2,6-Toluenediamine at third attack UNI EN 13130-1:2005 + JRC-IHCP EU RL-FCM Aromatic amines Protocol A Ed.1 2011		< 0.001		mg/kg	0.001		0_A		21/06	12/07
4,4-Methylenedi-o-toluidine at first attack UNI EN 13130-1:2005 + JRC-IHCP EU RL-FCM Aromatic amines Protocol A Ed.1 2011		< 0.001		mg/kg	0.001	0.002	0_A		21/06	12/07
4,4-Methylenedi-o-toluidine at second attack UNI EN 13130-1:2005 + JRC-IHCP EU RL-FCM Aromatic amines Protocol A Ed.1 2011		< 0.001		mg/kg	0.001	0.002	0_A		21/06	12/07
4,4-Methylenedi-o-toluidine at third attack UNI EN 13130-1:2005 + JRC-IHCP EU RL-FCM Aromatic amines Protocol A Ed.1 2011		< 0.001		mg/kg	0.001	0.002	0_A		21/06	12/07
2,6-Dimethylaniline at first attack UNI EN 13130-1:2005 + JRC-IHCP EU RL-FCM Aromatic amines Protocol A Ed.1 2011		< 0.001		mg/kg	0.001		0_A		21/06	12/07
2,6-Dimethylaniline at second attack UNI EN 13130-1:2005 + JRC-IHCP EU RL-FCM Aromatic amines Protocol A Ed.1 2011		< 0.001		mg/kg	0.001		0_A		21/06	12/07
2,6-Dimethylaniline at third attack UNI EN 13130-1:2005 + JRC-IHCP EU RL-FCM Aromatic amines Protocol A Ed.1 2011		< 0.001		mg/kg	0.001		0_A		21/06	12/07
o-Anisidine at first attack UNI EN 13130-1:2005 + JRC-IHCP EU RL-FCM Aromatic amines Protocol A Ed.1 2011		< 0.001		mg/kg	0.001	0.002	0_A		21/06	12/07
o-Anisidine at second attack UNI EN 13130-1:2005 + JRC-IHCP EU RL-FCM Aromatic amines Protocol A Ed.1 2011		< 0.001		mg/kg	0.001	0.002	0_A		21/06	12/07
o-Anisidine at third attack UNI EN 13130-1:2005 + JRC-IHCP EU RL-FCM Aromatic amines Protocol A Ed.1 2011		< 0.001		mg/kg	0.001	0.002	0_A		21/06	12/07
* 2-naphthylamine at first attack UNI EN 13130-1:2005 + JRC-IHCP EU RL-FCM Aromatic amines Protocol A Ed.1 2011		< 0.001		mg/kg	0.001	0.002	0_A		21/06	12/07
* 2-naphthylamine at second attack UNI EN 13130-1:2005 + JRC-IHCP EU RL-FCM Aromatic amines Protocol A Ed.1 2011		< 0.001		mg/kg	0.001	0.002	0_A		21/06	12/07
* 2-naphthylamine at third attack UNI EN 13130-1:2005 + JRC-IHCP EU RL-FCM Aromatic amines Protocol A Ed.1 2011		< 0.001		mg/kg	0.001	0.002	0_A		21/06	12/07

This test report shall not be reproduced except in full, without written approval of the laboratory. The original test report is supplied in digital form and digitally signed by the authorised responsible (file 23-FC01305.p7m). Printed copy of the mentioned original digital test report has no legal value.

Format Report: FC06.01 rev.10 of 17/07/2023

Page 7 of 10

P.H. s.r.l. Società unipersonale soggetta al controllo e al coordinamento di TÜV SÜD AG
 - Sede legale e Laboratorio Alimenti: Via Sangallo, 29 50028 Barberino Tavarnelle (FI)
 - Uffici e Laboratorio Ambiente: Via Bramante, 10/12 50028 Barberino Tavarnelle (FI)
 - Laboratorio Ambiente: Z.I. Tito Scalo 85050 Tito (PZ)

mailto: PHLabs@tuvsud.com web: www.tuv.it/ph
 telefono: +39 055 80961 fax: +39 055 8071099
 telefono: +39 055 80677 fax: +39 055 8067850
 telefono: +39 0971 485795 fax: +39 0971 485795



pH Labs



LAB N° 0069 L

N° 23-FC01305

Test Method	Chemical parameters	Results	unc	u.m.	LOQ	Limits	o.u.	Note	Start date	End date
* 3,3'-dichlorobenzidine at first attack <i>UNI EN 13130-1:2005 + JRC-IHCP EU RL-FCM Aromatic amines Protocol A Ed.1 2011</i>	3,3'-dichlorobiphenyl-4,4'-ylen. at first attack	< 0.001		mg/kg	0.001	0.002	0_A		21/06	12/07
* 3,3'-dichlorobenzidine at second attack <i>UNI EN 13130-1:2005 + JRC-IHCP EU RL-FCM Aromatic amines Protocol A Ed.1 2011</i>	3,3'-dichlorobiphenyl-4,4'-ylen. at second attack	< 0.001		mg/kg	0.001	0.002	0_A		21/06	12/07
* 3,3'-dichlorobenzidine at third attack <i>UNI EN 13130-1:2005 + JRC-IHCP EU RL-FCM Aromatic amines Protocol A Ed.1 2011</i>	3,3'-dichlorobiphenyl-4,4'-ylen. at third attack	< 0.001		mg/kg	0.001	0.002	0_A		21/06	12/07
4-aminobiphenyl at first attacco <i>UNI EN 13130-1:2005 + JRC-IHCP EU RL-FCM Aromatic amines Protocol A Ed.1 2011</i>	4-aminobiphenyl at first attacco	< 0.001		mg/kg	0.001	0.002	0_A		21/06	12/07
4-aminobiphenyl at second attacco <i>UNI EN 13130-1:2005 + JRC-IHCP EU RL-FCM Aromatic amines Protocol A Ed.1 2011</i>	4-aminobiphenyl at second attacco	< 0.001		mg/kg	0.001	0.002	0_A		21/06	12/07
4-aminobiphenyl at third attacco <i>UNI EN 13130-1:2005 + JRC-IHCP EU RL-FCM Aromatic amines Protocol A Ed.1 2011</i>	4-aminobiphenyl at third attacco	< 0.001		mg/kg	0.001	0.002	0_A		21/06	12/07
Benzidine at first attack <i>UNI EN 13130-1:2005 + JRC-IHCP EU RL-FCM Aromatic amines Protocol A Ed.1 2011</i>	Benzidine at first attack	< 0.001		mg/kg	0.001	0.002	0_A		21/06	12/07
Benzidine at second attack <i>UNI EN 13130-1:2005 + JRC-IHCP EU RL-FCM Aromatic amines Protocol A Ed.1 2011</i>	Benzidine at second attack	< 0.001		mg/kg	0.001	0.002	0_A		21/06	12/07
Benzidine third attack <i>UNI EN 13130-1:2005 + JRC-IHCP EU RL-FCM Aromatic amines Protocol A Ed.1 2011</i>	Benzidine third attack	< 0.001		mg/kg	0.001	0.002	0_A		21/06	12/07
o-Toluidine at first attack <i>UNI EN 13130-1:2005 + JRC-IHCP EU RL-FCM Aromatic amines Protocol A Ed.1 2011</i>	o-Toluidine at first attack	< 0.001		mg/kg	0.001	0.002	0_A		21/06	12/07
o-Toluidine at second attack <i>UNI EN 13130-1:2005 + JRC-IHCP EU RL-FCM Aromatic amines Protocol A Ed.1 2011</i>	o-Toluidine at second attack	< 0.001		mg/kg	0.001	0.002	0_A		21/06	12/07
o-Toluidine at third attack <i>UNI EN 13130-1:2005 + JRC-IHCP EU RL-FCM Aromatic amines Protocol A Ed.1 2011</i>	o-Toluidine at third attack	< 0.001		mg/kg	0.001	0.002	0_A		21/06	12/07
2,4-Dimethylaniline at first attack <i>UNI EN 13130-1:2005 + JRC-IHCP EU RL-FCM Aromatic amines Protocol A Ed.1 2011</i>	2,4-Dimethylaniline at first attack	< 0.001		mg/kg	0.001		0_A		21/06	12/07
2,4-Dimethylaniline at second attack <i>UNI EN 13130-1:2005 + JRC-IHCP EU RL-FCM Aromatic amines Protocol A Ed.1 2011</i>	2,4-Dimethylaniline at second attack	< 0.001		mg/kg	0.001		0_A		21/06	12/07
2,4-Dimethylaniline at third attack <i>UNI EN 13130-1:2005 + JRC-IHCP EU RL-FCM Aromatic amines Protocol A Ed.1 2011</i>	2,4-Dimethylaniline at third attack	< 0.001		mg/kg	0.001		0_A		21/06	12/07
4-Chloro-o-Toluidine at first attack <i>UNI EN 13130-1:2005 + JRC-IHCP EU RL-FCM Aromatic amines Protocol A Ed.1 2011</i>	4-Chloro-o-Toluidine at first attack	< 0.001		mg/kg	0.001	0.002	0_A		21/06	12/07
4-Chloro-o-Toluidine at second attack <i>UNI EN 13130-1:2005 + JRC-IHCP EU RL-FCM Aromatic amines Protocol A Ed.1 2011</i>	4-Chloro-o-Toluidine at second attack	< 0.001		mg/kg	0.001	0.002	0_A		21/06	12/07
4-Chloro-o-Toluidine at third attack <i>UNI EN 13130-1:2005 + JRC-IHCP EU RL-FCM Aromatic amines Protocol A Ed.1 2011</i>	4-Chloro-o-Toluidine at third attack	< 0.001		mg/kg	0.001	0.002	0_A		21/06	12/07
2,4-Toluenediamine at first attack <i>UNI EN 13130-1:2005 + JRC-IHCP EU RL-FCM Aromatic amines Protocol A Ed.1 2011</i>	2,4-Toluenediamine at first attack	< 0.001		mg/kg	0.001	0.002	0_A		21/06	12/07

This test report shall not be reproduced except in full, without written approval of the laboratory. The original test report is supplied in digital form and digitally signed by the authorised responsible (file 23-FC01305.p7m). Printed copy of the mentioned original digital test report has no legal value.

Format Report: FC06.01 rev.10 of 17/07/2023

Page 8 of 10

P.H. s.r.l. Società unipersonale soggetta al controllo e al coordinamento di TÜV SÜD AG
 - Sede legale e Laboratorio Alimentari: Via Sangallo, 29 50028 Barberino Tavarnelle (FI)
 - Uffici e Laboratorio Ambiente: Via Bramante, 10/12 50028 Barberino Tavarnelle (FI)
 - Laboratorio Ambiente: Z.I. Tito Scalo 85050 Tito (PZ)

mailto: PHLabs@tuvsud.com web: www.tuv.it/ph
 telefono: +39 055 80961 fax: +39 055 8071099
 telefono: +39 055 80677 fax: +39 055 8067850
 telefono: +39 0971 485795 fax: +39 0971 485795



pH Labs



LAB N° 0069 L

N° 23-FC01305

Test Method	Chemical parameters	Results	unc	u.m.	LOQ	Limits	o.u.	Note	Start date	End date
2,4-Toluenediamine at second attack 2011		< 0.001		mg/kg	0.001	0.002	0_A		21/06	12/07
2,4-Toluenediamine at third attack UNI EN 13130-1:2005 + JRC-IHCP EU RL-FCM Aromatic amines Protocol A Ed.1 2011		< 0.001		mg/kg	0.001	0.002	0_A		21/06	12/07
* o-aminoazotoluene,4-amino-2',3-dimethylazobenzen. at first attack UNI EN 13130-1:2005 + JRC-IHCP EU RL-FCM Aromatic amines Protocol A Ed.1 2011		< 0.001		mg/kg	0.001	0.002	0_A		21/06	12/07
* o-aminoazotoluene,4-amino-2',3-dimethylazobenzen. at second attack UNI EN 13130-1:2005 + JRC-IHCP EU RL-FCM Aromatic amines Protocol A Ed.1 2011		< 0.001		mg/kg	0.001	0.002	0_A		21/06	12/07
* o-aminoazotoluene,4-amino-2',3-dimethylazobenzen. at third attack UNI EN 13130-1:2005 + JRC-IHCP EU RL-FCM Aromatic amines Protocol A Ed.1 2011		< 0.001		mg/kg	0.001	0.002	0_A		21/06	12/07
* 5-nitro-o-toluidine at first attack UNI EN 13130-1:2005 + JRC-IHCP EU RL-FCM Aromatic amines Protocol A Ed.1 2011		< 0.001		mg/kg	0.001	0.002	0_A		21/06	12/07
* 5-nitro-o-toluidine at second attack UNI EN 13130-1:2005 + JRC-IHCP EU RL-FCM Aromatic amines Protocol A Ed.1 2011		< 0.001		mg/kg	0.001	0.002	0_A		21/06	12/07
* 5-nitro-o-toluidine at third attack UNI EN 13130-1:2005 + JRC-IHCP EU RL-FCM Aromatic amines Protocol A Ed.1 2011		< 0.001		mg/kg	0.001	0.002	0_A		21/06	12/07
SUM OF PRIMARY AROMATIC AMINES IN ACETIC ACID 3% AT FIRST ATTACK UNI EN 13130-1:2005 + JRC-IHCP EU RL-FCM Aromatic amines Protocol A Ed.1 2011		< 0.01		mg/kg	0.01	0.01	0_A		21/06	12/07
SUM OF PRIMARY AROMATIC AMINES IN ACETIC ACID 3% AT SECOND ATTACK UNI EN 13130-1:2005 + JRC-IHCP EU RL-FCM Aromatic amines Protocol A Ed.1 2011		< 0.01		mg/kg	0.01	0.01	0_A		21/06	12/07
SUM OF PRIMARY AROMATIC AMINES IN ACETIC ACID 3% AT THIRD ATTACK UNI EN 13130-1:2005 + JRC-IHCP EU RL-FCM Aromatic amines Protocol A Ed.1 2011		< 0.01		mg/kg	0.01	0.01	0_A		21/06	12/07

Legend:
unc = uncertainty; u.m. = unit of measurement; LOQ (limit of quantification); o.u. (operative unit); 0_A (test performed at o.u. Barberino Tavarnelle - FI, Sangallo street); 0_B (test performed at o.u. Barberino Tavarnelle - FI, Bramante street); II (mobile lab.); III (external analysis); LE.# (Subcontracted Test performed by a different lab.);

(* not accredited test by ACCREDIA)

(§) The laboratory declines all responsibility for sampling.

(C) Information provided by the Client/Third Party. The laboratory accepts no responsibility for results obtained from calculations using data provided by the Client/Third Party.

Limits referred to Reg. UE 10/2011 + Reg. UE 1245/2020

NOTE

Ratio S/V = 14.2 dm²/l

- For Chemical test, expanded uncertainty is referred to 95% confidence level. Coverage factor k=2.
- The limit of determination (LOD) results as 3/10LOQ if not indicated otherwise.
- The Laboratory uses the point as decimal separator.
- Where a declaration of conformity to a specification or standard is required, unless the decision rule is already contained in the specification or standard

This test report shall not be reproduced except in full, without written approval of the laboratory. The original test report is supplied in digital form and digitally signed by the authorised responsible (file 23-FC01305.p7m). Printed copy of the mentioned original digital test report has no legal value.

Format Report: FC06.01 rev.10 of 17/07/2023

Page 9 of 10

P.H. s.r.l. Società unipersonale soggetta al controllo e al coordinamento di TÜV SÜD AG
- Sede legale e Laboratorio Alimentari: Via Sangallo, 29 50028 Barberino Tavarnelle (FI)
- Uffici e Laboratorio Ambiente: Via Bramante, 10/12 50028 Barberino Tavarnelle (FI)
- Laboratorio Ambiente: Z.I. Tito Scalo 85050 Tito (PZ)

mailto: PHLabs@tuvsud.com web: www.tuv.it/ph
telefono: +39 055 80961 fax: +39 055 8071099
telefono: +39 055 80677 fax: +39 055 8067850
telefono: +39 0971 485795 fax: +39 0971 485795



pH Labs



LAB N° 0069 L

N° 23-FC01305

Itself, the laboratory shall adopt as its decision rule the direct comparison with the limit without taking into account the uncertainty.

NOTES AND GENERAL EVALUATIONS: (not subject to accreditation Accredia)

Limited to the parameters analyzed, the sample complies with Reg. EU 10/2011 and its amendments and with DM 21/03/1973 and its amendments

- The results refer to the sample as received.
- The reported results only refer to the tested sample. Sample conditions at the arrival are recorded in the laboratory managing system.
- Food and not perishable samples are store for 30 day from the arrival date. Water, compost and perishable samples are stored until the emission of the Test Report.
- pH is registered under number 013 on the regional list of approved laboratories for analysis in the context of self-control procedures in the food industry (LR Tuscany No. 9 09/03/2006).

Date, 14/08/2023



as per Technical Manager
dott. Patrizio Nuti

Number of documents
attached to this Test Report: 1

This test report shall not be reproduced except in full, without written approval of the laboratory. The original test report is supplied in digital form and digitally signed by the authorised responsible (file 23-FC01305.p7m). Printed copy of the mentioned original digital test report has no legal value.

Format Report: FC06.01 rev.10 of 17/07/2023

Page 10 of 10

P.H. s.r.l. Società unipersonale soggetta al controllo e al coordinamento di TÜV SÜD AG
 - Sede legale e Laboratorio Alimenti: Via Sangallo, 29 50028 Barberino Tavarnelle (FI)
 - Uffici e Laboratorio Ambiente: Via Bramante, 10/12 50028 Barberino Tavarnelle (FI)
 - Laboratorio Ambiente: Z.I. Tito Scalo 85050 Tito (PZ)

mailto: PHLabs@tuvsud.com web: www.tuv.it/ph
 telefono: +39 055 80961 fax: +39 055 8071099
 telefono: +39 055 80677 fax: +39 055 8067850
 telefono: +39 0971 485795 fax: +39 0971 485795



pH Labs

ATTACHED to the Test Report N° 23-FC01305

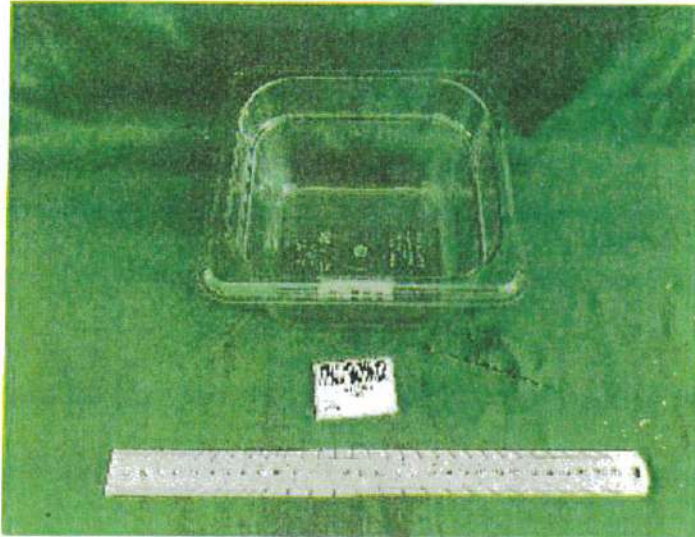


photo n. 1



pH Labs



LAB N° 0069 L

TEST REPORT

N° 23-FC01306

Sample identification number: 23-FC01306
 (C) Sample description: 64CW110 Black - Black Polycarbonate
 (C) Sampled by: Customer (§)
 (C) Customer: CAMBRO PRESSWERK KONGEN GMBH
 Kelterstrasse 51
 UNTERENSINGEN 72669
 Arrival date: 21/06/2023

RESULTS

Test Method	Chemical parameters	Results	unc	u.m.	LOQ	Limits	o.u.	Note	Start date	End date
* Time and temperature at first, second, third attack										
* Time		4.0		hour					21/06	21/06
* Temperature		100		°C					21/06	21/06
	Colorants specific migration in ethanol 10% by filling <i>DM n°34 21/03/1973 SO GU n°104 20/04/1973 All IV Sez VII</i>	> 98		%T		>95	0_A		21/06	13/07
	Colorants specific migration in acetic acid 3% by filling <i>DM n°34 21/03/1973 SO GU n°104 20/04/1973 All IV Sez VII</i>	> 98		%T		>95	0_A		21/06	13/07
	Colorants specific migration in sunflower oil by filling <i>DM n°34 21/03/1973 SO GU n°104 20/04/1973 All IV Sez VII</i>	> 98		%T		>95	0_A		21/06	13/07
19 METALS SPECIFIC MIGRATION IN ACETIC ACID 3% at first, second and third attack <i>UNI EN 13130-1:2005 + EPA 6010D 2018</i>							0_A			
	Aluminum at first attack <i>UNI EN 13130-1:2005 + EPA 6010D 2018</i>	< 0.1		mg/kg	0.1	1	0_A		21/06	10/07
	Aluminum at second attack <i>UNI EN 13130-1:2005 + EPA 6010D 2018</i>	< 0.1		mg/kg	0.1	1	0_A		21/06	10/07
	Aluminum at third attack <i>UNI EN 13130-1:2005 + EPA 6010D 2018</i>	< 0.1		mg/kg	0.1	1	0_A		21/06	10/07
* Antimony at first attack <i>UNI EN 13130-1:2005 + EPA 6010D 2018</i>		< 0.01		mg/kg	0.01	0.04	0_A		21/06	11/07
* Antimony at second attack <i>UNI EN 13130-1:2005 + EPA 6010D 2018</i>		< 0.01		mg/kg	0.01	0.04	0_A		21/06	11/07
* Antimony at third attack <i>UNI EN 13130-1:2005 + EPA 6010D 2018</i>		< 0.01		mg/kg	0.01	0.04	0_A		21/06	12/07
* Arsenic at first attack <i>UNI EN 13130-1:2005 + EPA 6010D 2018</i>		< 0.01		mg/kg	0.01	0.01	0_A		21/06	11/07
* Arsenic at second attack <i>UNI EN 13130-1:2005 + EPA 6010D 2018</i>		< 0.01		mg/kg	0.01	0.01	0_A		21/06	11/07
* Arsenic at third attack <i>UNI EN 13130-1:2005 + EPA 6010D 2018</i>		< 0.01		mg/kg	0.01	0.01	0_A		21/06	12/07
	Barium at first attack <i>UNI EN 13130-1:2005 + EPA 6010D 2018</i>	< 0.1		mg/kg	0.1	1	0_A		21/06	10/07
	Barium at second attack <i>UNI EN 13130-1:2005 + EPA 6010D 2018</i>	< 0.1		mg/kg	0.1	1	0_A		21/06	10/07
	Barium at third attack <i>UNI EN 13130-1:2005 + EPA 6010D 2018</i>	< 0.1		mg/kg	0.1	1	0_A		21/06	18/07
* Cadmium at first attack <i>UNI EN 13130-1:2005 + EPA 6010D 2018</i>		< 0.002		mg/kg	0.002	0.002	0_A		21/06	11/07

This test report shall not be reproduced except in full, without written approval of the laboratory. The original test report is supplied in digital form and digitally signed by the authorised responsible (file 23-FC01306.p7m). Printed copy of the mentioned original digital test report has no legal value.

Format Report: FC06.01 rev.10 of 17/07/2023

Page 1 of 8

P.H. s.r.l. Società unipersonale soggetta al controllo e al coordinamento di TÜV SÜD AG
 - Sede legale e Laboratorio Alimenti: Via Sangallo, 29 50028 Barberino Tavarnelle (FI)
 - Uffici e Laboratorio Ambiente: Via Bramante, 10/12 50028 Barberino Tavarnelle (FI)
 - Laboratorio Ambiente: Z.I. Tito Scalo 85050 Tito (PZ)

mailto: PHLabs@tuvsud.com web: www.tuv.it/ph
 telefono: +39 055 80961 fax: +39 055 8071099
 telefono: +39 055 80677 fax: +39 055 8067850
 telefono: +39 0971 485795 fax: +39 0971 485795



pH Labs



LAB N° 0069 L

N° 23-FC01306

Test Method	Chemical parameters	Results	unc	u.m.	LOQ	Limits	o.u.	Note	Start date	End date
* Cadmium at second attack <i>UNI EN 13130-1:2005 + EPA 6010D 2018</i>		< 0.002		mg/kg	0.002	0.002	0_A		21/06	11/07
* Cadmium at third attack <i>UNI EN 13130-1:2005 + EPA 6010D 2018</i>		< 0.002		mg/kg	0.002	0.002	0_A		21/06	12/07
Cobalt at first attack <i>UNI EN 13130-1:2005 + EPA 6010D 2018</i>		< 0.01		mg/kg	0.01	0.05	0_A		21/06	10/07
Cobalt at second attack <i>UNI EN 13130-1:2005 + EPA 6010D 2018</i>		< 0.01		mg/kg	0.01	0.05	0_A		21/06	10/07
Cobalt at third attack <i>UNI EN 13130-1:2005 + EPA 6010D 2018</i>		< 0.01		mg/kg	0.01	0.05	0_A		21/06	18/07
* Chromium at first attack <i>UNI EN 13130-1:2005 + EPA 6010D 2018</i>		< 0.01		mg/kg	0.01	0.01	0_A		21/06	10/07
* Chromium at second attack <i>UNI EN 13130-1:2005 + EPA 6010D 2018</i>		< 0.01		mg/kg	0.01	0.01	0_A		21/06	10/07
* Chromium at third attack <i>UNI EN 13130-1:2005 + EPA 6010D 2018</i>		< 0.01		mg/kg	0.01	0.01	0_A		21/06	18/07
* Europium at first attack <i>UNI EN 13130-1:2005 + EPA 6010D 2018</i>		< 0.01		mg/kg	0.01	0.05	0_A		21/06	10/07
* Europium at second attack <i>UNI EN 13130-1:2005 + EPA 6010D 2018</i>		< 0.01		mg/kg	0.01	0.05	0_A		21/06	10/07
* Europium at third attack <i>UNI EN 13130-1:2005 + EPA 6010D 2018</i>		< 0.01		mg/kg	0.01	0.05	0_A		21/06	18/07
Iron at first attack <i>UNI EN 13130-1:2005 + EPA 6010D 2018</i>		< 0.1		mg/kg	0.1	48	0_A		21/06	10/07
Iron at second attack <i>UNI EN 13130-1:2005 + EPA 6010D 2018</i>		< 0.1		mg/kg	0.1	48	0_A		21/06	10/07
Iron at third attack <i>UNI EN 13130-1:2005 + EPA 6010D 2018</i>		< 0.1		mg/kg	0.1	48	0_A		21/06	18/07
* Gadolinium at first attack <i>UNI EN 13130-1:2005 + EPA 6010D 2018</i>		< 0.01		mg/kg	0.01	0.05	0_A		21/06	10/07
* Gadolinium at second attack <i>UNI EN 13130-1:2005 + EPA 6010D 2018</i>		< 0.01		mg/kg	0.01	0.05	0_A		21/06	10/07
* Gadolinium at third attack <i>UNI EN 13130-1:2005 + EPA 6010D 2018</i>		< 0.01		mg/kg	0.01	0.05	0_A		21/06	18/07
* Lanthanum at first attack <i>UNI EN 13130-1:2005 + EPA 6010D 2018</i>		< 0.01		mg/kg	0.01	0.05	0_A		21/06	10/07
* Lanthanum at second attack <i>UNI EN 13130-1:2005 + EPA 6010D 2018</i>		< 0.01		mg/kg	0.01	0.05	0_A		21/06	10/07
* Lanthanum at third attack <i>UNI EN 13130-1:2005 + EPA 6010D 2018</i>		< 0.01		mg/kg	0.01	0.05	0_A		21/06	18/07
Lithium at first attack <i>UNI EN 13130-1:2005 + EPA 6010D 2018</i>		< 0.1		mg/kg	0.1	0.6	0_A		21/06	10/07
Lithium at second attack <i>UNI EN 13130-1:2005 + EPA 6010D 2018</i>		< 0.1		mg/kg	0.1	0.6	0_A		21/06	10/07
Lithium at third attack <i>UNI EN 13130-1:2005 + EPA 6010D 2018</i>		< 0.1		mg/kg	0.1	0.6	0_A		21/06	18/07
Manganese at first attack <i>UNI EN 13130-1:2005 + EPA 6010D 2018</i>		< 0.05		mg/kg	0.05	0.6	0_A		21/06	10/07
Manganese at second attack <i>UNI EN 13130-1:2005 + EPA 6010D 2018</i>		< 0.05		mg/kg	0.05	0.6	0_A		21/06	10/07
Manganese at third attack <i>UNI EN 13130-1:2005 + EPA 6010D 2018</i>		< 0.05		mg/kg	0.05	0.6	0_A		21/06	18/07
* Mercury at first attack <i>UNI EN 13130-1:2005 + EPA 6010D 2018</i>		< 0.005		mg/kg	0.005	0.01	0_A		21/06	11/07

This test report shall not be reproduced except in full, without written approval of the laboratory. The original test report is supplied in digital form and digitally signed by the authorised responsible (file 23-FC01306.p7m). Printed copy of the mentioned original digital test report has no legal value.

Format Report: FC06.01 rev.10 of 17/07/2023

Page 2 of 8

P.H. s.r.l. Società unipersonale soggetta al controllo e al coordinamento di TÜV SÜD AG
 - Sede legale e Laboratorio Alimenti: Via Sangallo, 29 50028 Barberino Tavarnelle (FI)
 - Uffici e Laboratorio Ambiente: Via Bramante, 10/12 50028 Barberino Tavarnelle (FI)
 - Laboratorio Ambiente: Z.I. Tito Scalo 85050 Tito (PZ)

mailto: PHLabs@tuvsud.com web: www.tuv.it/ph
 telefono: +39 055 80961 fax: +39 055 8071099
 telefono: +39 055 80677 fax: +39 055 8067850
 telefono: +39 0971 485795 fax: +39 0971 485795



pH Labs



LAB N° 0069 L

N° 23-FC01306

Test Method	Chemical parameters	Results	unc	u.m.	LOQ	Limits	o.u.	Note	Start date	End date
* Mercury at second attack <i>UNI EN 13130-1:2005 + EPA 6010D 2018</i>		< 0.005		mg/kg	0.005	0.01	0_A		21/06	11/07
* Mercury at third attack <i>UNI EN 13130-1:2005 + EPA 6010D 2018</i>		< 0.005		mg/kg	0.005	0.01	0_A		21/06	12/07
Nickel at first attack <i>UNI EN 13130-1:2005 + EPA 6010D 2018</i>		< 0.01		mg/kg	0.01	0.02	0_A		21/06	10/07
Nickel at second attack <i>UNI EN 13130-1:2005 + EPA 6010D 2018</i>		< 0.01		mg/kg	0.01	0.02	0_A		21/06	10/07
Nickel at third attack <i>UNI EN 13130-1:2005 + EPA 6010D 2018</i>		< 0.01		mg/kg	0.01	0.02	0_A		21/06	18/07
* Lead at first attack <i>UNI EN 13130-1:2005 + EPA 6010D 2018</i>		< 0.01		mg/kg	0.01	0.01	0_A		21/06	11/07
* Lead at second attack <i>UNI EN 13130-1:2005 + EPA 6010D 2018</i>		< 0.01		mg/kg	0.01	0.01	0_A		21/06	11/07
* Lead at third attack <i>UNI EN 13130-1:2005 + EPA 6010D 2018</i>		< 0.01		mg/kg	0.01	0.01	0_A		21/06	12/07
Copper at first attack <i>UNI EN 13130-1:2005 + EPA 6010D 2018</i>		< 0.1		mg/kg	0.1	5	0_A		21/06	10/07
Copper at second attack <i>UNI EN 13130-1:2005 + EPA 6010D 2018</i>		< 0.1		mg/kg	0.1	5	0_A		21/06	10/07
Copper at third attack <i>UNI EN 13130-1:2005 + EPA 6010D 2018</i>		< 0.1		mg/kg	0.1	5	0_A		21/06	18/07
* Sum of lanthanides (Eu+Gd+La+Tb) at first attack <i>UNI EN 13130-1:2005 + EPA 6010D 2018</i>		< 0.01		mg/kg	0.01	0.05	0_A		21/06	10/07
* Sum of lanthanides (Eu+Gd+La+Tb) at second attack <i>UNI EN 13130-1:2005 + EPA 6010D 2018</i>		< 0.01		mg/kg	0.01	0.05	0_A		21/06	10/07
* Sum of lanthanides (Eu+Gd+La+Tb) at third attack <i>UNI EN 13130-1:2005 + EPA 6010D 2018</i>		< 0.01		mg/kg	0.01	0.05	0_A		21/06	18/07
* Terbium at first attack <i>UNI EN 13130-1:2005 + EPA 6010D 2018</i>		< 0.01		mg/kg	0.01	0.05	0_A		21/06	10/07
* Terbium at second attack <i>UNI EN 13130-1:2005 + EPA 6010D 2018</i>		< 0.01		mg/kg	0.01	0.05	0_A		21/06	10/07
* Terbium at third attack <i>UNI EN 13130-1:2005 + EPA 6010D 2018</i>		< 0.01		mg/kg	0.01	0.05	0_A		21/06	18/07
Zinc at first attack <i>UNI EN 13130-1:2005 + EPA 6010D 2018</i>		< 0.1		mg/kg	0.1	5	0_A		21/06	10/07
Zinc at second attack <i>UNI EN 13130-1:2005 + EPA 6010D 2018</i>		< 0.1		mg/kg	0.1	5	0_A		21/06	10/07
Zinc at third attack <i>UNI EN 13130-1:2005 + EPA 6010D 2018</i>		< 0.1		mg/kg	0.1	5	0_A		21/06	18/07
Specific migration of PAA Reg. 10/2011 Annex II at first, second and third attack in 3% acetic acid <i>UNI EN 13130-1:2005 + JRC-IHCP EU RL-FCM Aromatic amines Protocol A Ed.1 2011</i>		-					0_A			
* 2,2'-dichloro-4,4'-methylenedianiline at first attack <i>UNI EN 13130-1:2005 + JRC-IHCP EU RL-FCM Aromatic amines Protocol A Ed.1 2011</i>		< 0.001		mg/kg	0.001	0.002	0_A		21/06	12/07
* 2,2'-dichloro-4,4'-methylenedianiline at second attack <i>UNI EN 13130-1:2005 + JRC-IHCP EU RL-FCM Aromatic amines Protocol A Ed.1 2011</i>		< 0.001		mg/kg	0.001	0.002	0_A		21/06	12/07
* 2,2'-dichloro-4,4'-methylenedianiline at third attack <i>UNI EN 13130-1:2005 + JRC-IHCP EU RL-FCM Aromatic amines Protocol A Ed.1 2011</i>		< 0.001		mg/kg	0.001	0.002	0_A		21/06	12/07
4,4-Methylenedianiline at first attack <i>UNI EN 13130-1:2005 + JRC-IHCP EU RL-FCM Aromatic amines Protocol A Ed.1 2011</i>		< 0.001		mg/kg	0.001	0.002	0_A		21/06	12/07

This test report shall not be reproduced except in full, without written approval of the laboratory. The original test report is supplied in digital form and digitally signed by the authorised responsible (file 23-FC01306.p7m). Printed copy of the mentioned original digital test report has no legal value.

Format Report: FC06.01 rev.10 of 17/07/2023

Page 3 of 8

P.H. s.r.l. Società unipersonale soggetta al controllo e al coordinamento di TÜV SÜD AG
 - Sede legale e Laboratorio Alimentari: Via Sangallo, 29 50028 Barberino Tavarnelle (FI)
 - Uffici e Laboratorio Ambiente: Via Bramante, 10/12 50028 Barberino Tavarnelle (FI)
 - Laboratorio Ambiente: Z.I. Tito Scalo 85050 Tito (PZ)

mailto: PH.Labs@tuvsud.com web: www.tuv.it/ph
 telefono: +39 055 80961 fax: +39 055 8071099
 telefono: +39 055 80677 fax: +39 055 8067850
 telefono: +39 0971 485795 fax: +39 0971 485795



pH Labs



LAB N° 0069 L

N° 23-FC01306

Test Method	Chemical parameters	Results	unc	u.m.	LOQ	Limits	o.u.	Note	Start date	End date
	4,4-Methylenedianiline at second attack <i>UNI EN 13130-1:2005 + JRC-IHCP EU RL-FCM Aromatic amines Protocol A Ed.1 2011</i>	< 0.001		mg/kg	0.001	0.002	0_A		21/06	12/07
	4,4-Methylenedianiline at third attack <i>UNI EN 13130-1:2005 + JRC-IHCP EU RL-FCM Aromatic amines Protocol A Ed.1 2011</i>	< 0.001		mg/kg	0.001	0.002	0_A		21/06	12/07
	4,4-Diaminodiphenylether at first attack <i>UNI EN 13130-1:2005 + JRC-IHCP EU RL-FCM Aromatic amines Protocol A Ed.1 2011</i>	< 0.001		mg/kg	0.001	0.002	0_A		21/06	12/07
	4,4-Diaminodiphenylether at second attack <i>UNI EN 13130-1:2005 + JRC-IHCP EU RL-FCM Aromatic amines Protocol A Ed.1 2011</i>	< 0.001		mg/kg	0.001	0.002	0_A		21/06	12/07
	4,4-Diaminodiphenylether at third attack <i>UNI EN 13130-1:2005 + JRC-IHCP EU RL-FCM Aromatic amines Protocol A Ed.1 2011</i>	< 0.001		mg/kg	0.001	0.002	0_A		21/06	12/07
	4-Chloro-Aniline at first attack <i>UNI EN 13130-1:2005 + JRC-IHCP EU RL-FCM Aromatic amines Protocol A Ed.1 2011</i>	< 0.001		mg/kg	0.001	0.002	0_A		21/06	12/07
	4-Chloro-Aniline at second attack <i>UNI EN 13130-1:2005 + JRC-IHCP EU RL-FCM Aromatic amines Protocol A Ed.1 2011</i>	< 0.001		mg/kg	0.001	0.002	0_A		21/06	12/07
	4-Chloro-Aniline at third attack <i>UNI EN 13130-1:2005 + JRC-IHCP EU RL-FCM Aromatic amines Protocol A Ed.1 2011</i>	< 0.001		mg/kg	0.001	0.002	0_A		21/06	12/07
	Phenylendiamine at first attack <i>UNI EN 13130-1:2005 + JRC-IHCP EU RL-FCM Aromatic amines Protocol A Ed.1 2011</i>	< 0.002		mg/kg	0.002		0_A		21/06	12/07
	Phenylendiamine at second attack <i>UNI EN 13130-1:2005 + JRC-IHCP EU RL-FCM Aromatic amines Protocol A Ed.1 2011</i>	< 0.002		mg/kg	0.002		0_A		21/06	12/07
	Phenylendiamine at third attack <i>UNI EN 13130-1:2005 + JRC-IHCP EU RL-FCM Aromatic amines Protocol A Ed.1 2011</i>	< 0.002		mg/kg	0.002		0_A		21/06	12/07
*	3,3'-Dimethoxybenzidine o-Dianisidine at first attack <i>UNI EN 13130-1:2005 + JRC-IHCP EU RL-FCM Aromatic amines Protocol A Ed.1 2011</i>	< 0.001		mg/kg	0.001	0.002	0_A		21/06	12/07
*	3,3'-Dimethoxybenzidine o-Dianisidine at second attack <i>UNI EN 13130-1:2005 + JRC-IHCP EU RL-FCM Aromatic amines Protocol A Ed.1 2011</i>	< 0.001		mg/kg	0.001	0.002	0_A		21/06	12/07
*	3,3'-Dimethoxybenzidine o-Dianisidine at third attack <i>UNI EN 13130-1:2005 + JRC-IHCP EU RL-FCM Aromatic amines Protocol A Ed.1 2011</i>	< 0.001		mg/kg	0.001	0.002	0_A		21/06	12/07
	3,3-Dimethylbenzidine at first attack <i>UNI EN 13130-1:2005 + JRC-IHCP EU RL-FCM Aromatic amines Protocol A Ed.1 2011</i>	< 0.001		mg/kg	0.001	0.002	0_A		21/06	12/07
	3,3-Dimethylbenzidine at second attack <i>UNI EN 13130-1:2005 + JRC-IHCP EU RL-FCM Aromatic amines Protocol A Ed.1 2011</i>	< 0.001		mg/kg	0.001	0.002	0_A		21/06	12/07
	3,3-Dimethylbenzidine at third attack <i>UNI EN 13130-1:2005 + JRC-IHCP EU RL-FCM Aromatic amines Protocol A Ed.1 2011</i>	< 0.001		mg/kg	0.001	0.002	0_A		21/06	12/07
	2-Methoxy-5-Methylaniline at first attack <i>UNI EN 13130-1:2005 + JRC-IHCP EU RL-FCM Aromatic amines Protocol A Ed.1 2011</i>	< 0.001		mg/kg	0.001	0.002	0_A		21/06	12/07
	2-Methoxy-5-Methylaniline at second attack <i>UNI EN 13130-1:2005 + JRC-IHCP EU RL-FCM Aromatic amines Protocol A Ed.1 2011</i>	< 0.001		mg/kg	0.001	0.002	0_A		21/06	12/07
	2-Methoxy-5-Methylaniline at third attack <i>UNI EN 13130-1:2005 + JRC-IHCP EU RL-FCM Aromatic amines Protocol A Ed.1 2011</i>	< 0.001		mg/kg	0.001	0.002	0_A		21/06	12/07

This test report shall not be reproduced except in full, without written approval of the laboratory. The original test report is supplied in digital form and digitally signed by the authorised responsible (file 23-FC01306.p7m). Printed copy of the mentioned original digital test report has no legal value.

Format Report: FC06.01 rev.10 of 17/07/2023

Page 4 of 8

P.H. s.r.l. Società unipersonale soggetta al controllo e al coordinamento di TÜV SÜD AG
 - Sede legale e Laboratorio Alimenti: Via Sangallo, 29 50028 Barberino Tavarnelle (FI)
 - Uffici e Laboratorio Ambiente: Via Bramante, 10/12 50028 Barberino Tavarnelle (FI)
 - Laboratorio Ambiente: Z.I. Tito Scalo 85050 Tito (PZ)

mailto: PHLabs@tuvsud.com web: www.tuv.it/ph
 telefono: +39 055 80961 fax: +39 055 8071099
 telefono: +39 055 80677 fax: +39 055 8067850
 telefono: +39 0971 485795 fax: +39 0971 485795



pH Labs



LAB N° 0069 L

N° 23-FC01306

Test Method	Chemical parameters	Results	unc	u.m.	LOQ	Limits	o.u.	Note	Start date	End date
2,4,5-Trimethylaniline at first attack 2011		< 0.001		mg/kg	0.001	0.002	0_A		21/06	12/07
2,4,5-Trimethylaniline at second attack UNI EN 13130-1:2005 + JRC-IHCP EU RL-FCM Aromatic amines Protocol A Ed.1 2011		< 0.001		mg/kg	0.001	0.002	0_A		21/06	12/07
2,4,5-Trimethylaniline at third attack UNI EN 13130-1:2005 + JRC-IHCP EU RL-FCM Aromatic amines Protocol A Ed.1 2011		< 0.001		mg/kg	0.001	0.002	0_A		21/06	12/07
* 4,4'-thiodianiline at first attack UNI EN 13130-1:2005 + JRC-IHCP EU RL-FCM Aromatic amines Protocol A Ed.1 2011		< 0.001		mg/kg	0.001	0.002	0_A		21/06	12/07
* 4,4'-thiodianiline at second attack UNI EN 13130-1:2005 + JRC-IHCP EU RL-FCM Aromatic amines Protocol A Ed.1 2011		< 0.001		mg/kg	0.001	0.002	0_A		21/06	12/07
* 4,4'-thiodianiline at third attack UNI EN 13130-1:2005 + JRC-IHCP EU RL-FCM Aromatic amines Protocol A Ed.1 2011		< 0.001		mg/kg	0.001	0.002	0_A		21/06	12/07
* 4-Aminoazobenzene at first attack UNI EN 13130-1:2005 + JRC-IHCP EU RL-FCM Aromatic amines Protocol A Ed.1 2011		< 0.001		mg/kg	0.001	0.002	0_A		21/06	12/07
* 4-Aminoazobenzene at second attack UNI EN 13130-1:2005 + JRC-IHCP EU RL-FCM Aromatic amines Protocol A Ed.1 2011		< 0.001		mg/kg	0.001	0.002	0_A		21/06	12/07
* 4-Aminoazobenzene at third attack UNI EN 13130-1:2005 + JRC-IHCP EU RL-FCM Aromatic amines Protocol A Ed.1 2011		< 0.001		mg/kg	0.001	0.002	0_A		21/06	12/07
4-Methoxy-m-phenylenediamine at first attack UNI EN 13130-1:2005 + JRC-IHCP EU RL-FCM Aromatic amines Protocol A Ed.1 2011		< 0.001		mg/kg	0.001	0.002	0_A		21/06	12/07
4-Methoxy-m-phenylenediamine at second attack UNI EN 13130-1:2005 + JRC-IHCP EU RL-FCM Aromatic amines Protocol A Ed.1 2011		< 0.001		mg/kg	0.001	0.002	0_A		21/06	12/07
4-Methoxy-m-phenylenediamine at third attack UNI EN 13130-1:2005 + JRC-IHCP EU RL-FCM Aromatic amines Protocol A Ed.1 2011		< 0.001		mg/kg	0.001	0.002	0_A		21/06	12/07
Aniline at first attack UNI EN 13130-1:2005 + JRC-IHCP EU RL-FCM Aromatic amines Protocol A Ed.1 2011		< 0.001		mg/kg	0.001		0_A		21/06	12/07
Aniline at second attack UNI EN 13130-1:2005 + JRC-IHCP EU RL-FCM Aromatic amines Protocol A Ed.1 2011		< 0.001		mg/kg	0.001		0_A		21/06	12/07
Aniline at third attack UNI EN 13130-1:2005 + JRC-IHCP EU RL-FCM Aromatic amines Protocol A Ed.1 2011		< 0.001		mg/kg	0.001		0_A		21/06	12/07
2,6-Toluenediamine at first attack UNI EN 13130-1:2005 + JRC-IHCP EU RL-FCM Aromatic amines Protocol A Ed.1 2011		< 0.001		mg/kg	0.001		0_A		21/06	12/07
2,6-Toluenediamine at second attack UNI EN 13130-1:2005 + JRC-IHCP EU RL-FCM Aromatic amines Protocol A Ed.1 2011		< 0.001		mg/kg	0.001		0_A		21/06	12/07
2,6-Toluenediamine at third attack UNI EN 13130-1:2005 + JRC-IHCP EU RL-FCM Aromatic amines Protocol A Ed.1 2011		< 0.001		mg/kg	0.001		0_A		21/06	12/07
4,4-Methylenedi-o-toluidine at first attack UNI EN 13130-1:2005 + JRC-IHCP EU RL-FCM Aromatic amines Protocol A Ed.1 2011		< 0.001		mg/kg	0.001	0.002	0_A		21/06	12/07
4,4-Methylenedi-o-toluidine at second attack UNI EN 13130-1:2005 + JRC-IHCP EU RL-FCM Aromatic amines Protocol A Ed.1 2011		< 0.001		mg/kg	0.001	0.002	0_A		21/06	12/07
4,4-Methylenedi-o-toluidine at third attack UNI EN 13130-1:2005 + JRC-IHCP EU RL-FCM Aromatic amines Protocol A Ed.1 2011		< 0.001		mg/kg	0.001	0.002	0_A		21/06	12/07

This test report shall not be reproduced except in full, without written approval of the laboratory. The original test report is supplied in digital form and digitally signed by the authorised responsible (file 23-FC01306.p7m). Printed copy of the mentioned original digital test report has no legal value.

Format Report: FC06.01 rev.10 of 17/07/2023

Page 5 of 8

P.H. s.r.l. Società unipersonale soggetta al controllo e al coordinamento di TÜV SÜD AG
 - Sede legale e Laboratorio Alimenti: Via Sangallo, 29 50028 Barberino Tavarnelle (FI)
 - Uffici e Laboratorio Ambiente: Via Bramante, 10/12 50028 Barberino Tavarnelle (FI)
 - Laboratorio Ambiente: Z.I. Tito Scalo 85050 Tito (PZ)

mailto: PHLabs@tuvsud.com web: www.tuv.it/ph
 telefono: +39 055 80961 fax: +39 055 8071099
 telefono: +39 055 80677 fax: +39 055 8067850
 telefono: +39 0971 485795 fax: +39 0971 485795



pH Labs



LAB N° 0069 L

N° 23-FC01306

Test Method	Chemical parameters	Results	unc	u.m.	LOQ	Limits	o.u.	Note	Start date	End date
2,6-Dimethylaniline at first attack <i>UNI EN 13130-1:2005 + JRC-IHCP EU RL-FCM Aromatic amines Protocol A Ed.1 2011</i>		< 0.001		mg/kg	0.001		0_A		21/06	12/07
2,6-Dimethylaniline at second attack <i>UNI EN 13130-1:2005 + JRC-IHCP EU RL-FCM Aromatic amines Protocol A Ed.1 2011</i>		< 0.001		mg/kg	0.001		0_A		21/06	12/07
2,6-Dimethylaniline at third attack <i>UNI EN 13130-1:2005 + JRC-IHCP EU RL-FCM Aromatic amines Protocol A Ed.1 2011</i>		< 0.001		mg/kg	0.001		0_A		21/06	12/07
o-Anisidine at first attack <i>UNI EN 13130-1:2005 + JRC-IHCP EU RL-FCM Aromatic amines Protocol A Ed.1 2011</i>		< 0.001		mg/kg	0.001	0.002	0_A		21/06	12/07
o-Anisidine at second attack <i>UNI EN 13130-1:2005 + JRC-IHCP EU RL-FCM Aromatic amines Protocol A Ed.1 2011</i>		< 0.001		mg/kg	0.001	0.002	0_A		21/06	12/07
o-Anisidine at third attack <i>UNI EN 13130-1:2005 + JRC-IHCP EU RL-FCM Aromatic amines Protocol A Ed.1 2011</i>		< 0.001		mg/kg	0.001	0.002	0_A		21/06	12/07
* 2-naphthylamine at first attack <i>UNI EN 13130-1:2005 + JRC-IHCP EU RL-FCM Aromatic amines Protocol A Ed.1 2011</i>		< 0.001		mg/kg	0.001	0.002	0_A		21/06	12/07
* 2-naphthylamine at second attack <i>UNI EN 13130-1:2005 + JRC-IHCP EU RL-FCM Aromatic amines Protocol A Ed.1 2011</i>		< 0.001		mg/kg	0.001	0.002	0_A		21/06	12/07
* 2-naphthylamine at third attack <i>UNI EN 13130-1:2005 + JRC-IHCP EU RL-FCM Aromatic amines Protocol A Ed.1 2011</i>		< 0.001		mg/kg	0.001	0.002	0_A		21/06	12/07
* 3,3'-dichlorobenzidine 3,3'-dichlorobiphenyl-4,4'-ylen. at first attack <i>UNI EN 13130-1:2005 + JRC-IHCP EU RL-FCM Aromatic amines Protocol A Ed.1 2011</i>		< 0.001		mg/kg	0.001	0.002	0_A		21/06	12/07
* 3,3'-dichlorobenzidine 3,3'-dichlorobiphenyl-4,4'-ylen. at second attack <i>UNI EN 13130-1:2005 + JRC-IHCP EU RL-FCM Aromatic amines Protocol A Ed.1 2011</i>		< 0.001		mg/kg	0.001	0.002	0_A		21/06	12/07
* 3,3'-dichlorobenzidine 3,3'-dichlorobiphenyl-4,4'-ylen. at third attack <i>UNI EN 13130-1:2005 + JRC-IHCP EU RL-FCM Aromatic amines Protocol A Ed.1 2011</i>		< 0.001		mg/kg	0.001	0.002	0_A		21/06	12/07
4-aminobiphenyl at first attacco <i>UNI EN 13130-1:2005 + JRC-IHCP EU RL-FCM Aromatic amines Protocol A Ed.1 2011</i>		< 0.001		mg/kg	0.001	0.002	0_A		21/06	12/07
4-aminobiphenyl at second attacco <i>UNI EN 13130-1:2005 + JRC-IHCP EU RL-FCM Aromatic amines Protocol A Ed.1 2011</i>		< 0.001		mg/kg	0.001	0.002	0_A		21/06	12/07
4-aminobiphenyl at third attacco <i>UNI EN 13130-1:2005 + JRC-IHCP EU RL-FCM Aromatic amines Protocol A Ed.1 2011</i>		< 0.001		mg/kg	0.001	0.002	0_A		21/06	12/07
Benzidine at first attack <i>UNI EN 13130-1:2005 + JRC-IHCP EU RL-FCM Aromatic amines Protocol A Ed.1 2011</i>		< 0.001		mg/kg	0.001	0.002	0_A		21/06	12/07
Benzidine at second attack <i>UNI EN 13130-1:2005 + JRC-IHCP EU RL-FCM Aromatic amines Protocol A Ed.1 2011</i>		< 0.001		mg/kg	0.001	0.002	0_A		21/06	12/07
Benzidine third attack <i>UNI EN 13130-1:2005 + JRC-IHCP EU RL-FCM Aromatic amines Protocol A Ed.1 2011</i>		< 0.001		mg/kg	0.001	0.002	0_A		21/06	12/07
o-Toluidine at first attack <i>UNI EN 13130-1:2005 + JRC-IHCP EU RL-FCM Aromatic amines Protocol A Ed.1 2011</i>		< 0.001		mg/kg	0.001	0.002	0_A		21/06	12/07

This test report shall not be reproduced except in full, without written approval of the laboratory. The original test report is supplied in digital form and digitally signed by the authorised responsible (file 23-FC01306.p7m). Printed copy of the mentioned original digital test report has no legal value.

Format Report: FC06.01 rev.10 of 17/07/2023

Page 6 of 8

P.H. s.r.l. Società unipersonale soggetta al controllo e al coordinamento di TÜV SÜD AG
 - Sede legale e Laboratorio Alimenti: Via Sangallo, 29 50028 Barberino Tavarnelle (FI)
 - Uffici e Laboratorio Ambiente: Via Bramante, 10/12 50028 Barberino Tavarnelle (FI)
 - Laboratorio Ambiente: Z.I. Tito Scalo 85050 Tito (PZ)

mailto: PHLabs@tuvsud.com web: www.tuv.it/ph
 telefono: +39 055 80961 fax: +39 055 8071099
 telefono: +39 055 80677 fax: +39 055 8067850
 telefono: +39 0971 485795 fax: +39 0971 485795



pH Labs



LAB N° 0069 L

N° 23-FC01306

Test Method	Chemical parameters	Results	unc	u.m.	LOQ	Limits	o.u.	Note	Start date	End date
o-Toluidine at second attack <i>UNI EN 13130-1:2005 + JRC-IHCP EU RL-FCM Aromatic amines Protocol A Ed.1 2011</i>		< 0.001		mg/kg	0.001	0.002	0_A		21/06	12/07
o-Toluidine at third attack <i>UNI EN 13130-1:2005 + JRC-IHCP EU RL-FCM Aromatic amines Protocol A Ed.1 2011</i>		< 0.001		mg/kg	0.001	0.002	0_A		21/06	12/07
2,4-Dimethylaniline at first attack <i>UNI EN 13130-1:2005 + JRC-IHCP EU RL-FCM Aromatic amines Protocol A Ed.1 2011</i>		< 0.001		mg/kg	0.001		0_A		21/06	12/07
2,4-Dimethylaniline at second attack <i>UNI EN 13130-1:2005 + JRC-IHCP EU RL-FCM Aromatic amines Protocol A Ed.1 2011</i>		< 0.001		mg/kg	0.001		0_A		21/06	12/07
2,4-Dimethylaniline at third attack <i>UNI EN 13130-1:2005 + JRC-IHCP EU RL-FCM Aromatic amines Protocol A Ed.1 2011</i>		< 0.001		mg/kg	0.001		0_A		21/06	12/07
4-Chloro-o-Toluidine at first attack <i>UNI EN 13130-1:2005 + JRC-IHCP EU RL-FCM Aromatic amines Protocol A Ed.1 2011</i>		< 0.001		mg/kg	0.001	0.002	0_A		21/06	12/07
4-Chloro-o-Toluidine at second attack <i>UNI EN 13130-1:2005 + JRC-IHCP EU RL-FCM Aromatic amines Protocol A Ed.1 2011</i>		< 0.001		mg/kg	0.001	0.002	0_A		21/06	12/07
4-Chloro-o-Toluidine at third attack <i>UNI EN 13130-1:2005 + JRC-IHCP EU RL-FCM Aromatic amines Protocol A Ed.1 2011</i>		< 0.001		mg/kg	0.001	0.002	0_A		21/06	12/07
2,4-Toluenediamine at first attack <i>UNI EN 13130-1:2005 + JRC-IHCP EU RL-FCM Aromatic amines Protocol A Ed.1 2011</i>		< 0.001		mg/kg	0.001	0.002	0_A		21/06	12/07
2,4-Toluenediamine at second attack <i>UNI EN 13130-1:2005 + JRC-IHCP EU RL-FCM Aromatic amines Protocol A Ed.1 2011</i>		< 0.001		mg/kg	0.001	0.002	0_A		21/06	12/07
2,4-Toluenediamine at third attack <i>UNI EN 13130-1:2005 + JRC-IHCP EU RL-FCM Aromatic amines Protocol A Ed.1 2011</i>		< 0.001		mg/kg	0.001	0.002	0_A		21/06	12/07
* o-aminoazotoluene,4-amino-2',3-dimethylazobenzen. at first attack <i>UNI EN 13130-1:2005 + JRC-IHCP EU RL-FCM Aromatic amines Protocol A Ed.1 2011</i>		< 0.001		mg/kg	0.001	0.002	0_A		21/06	12/07
* o-aminoazotoluene,4-amino-2',3-dimethylazobenzen. at second attack <i>UNI EN 13130-1:2005 + JRC-IHCP EU RL-FCM Aromatic amines Protocol A Ed.1 2011</i>		< 0.001		mg/kg	0.001	0.002	0_A		21/06	12/07
* o-aminoazotoluene,4-amino-2',3-dimethylazobenzen. at third attack <i>UNI EN 13130-1:2005 + JRC-IHCP EU RL-FCM Aromatic amines Protocol A Ed.1 2011</i>		< 0.001		mg/kg	0.001	0.002	0_A		21/06	12/07
* 5-nitro-o-toluidine at first attack <i>UNI EN 13130-1:2005 + JRC-IHCP EU RL-FCM Aromatic amines Protocol A Ed.1 2011</i>		< 0.001		mg/kg	0.001	0.002	0_A		21/06	12/07
* 5-nitro-o-toluidine at second attack <i>UNI EN 13130-1:2005 + JRC-IHCP EU RL-FCM Aromatic amines Protocol A Ed.1 2011</i>		< 0.001		mg/kg	0.001	0.002	0_A		21/06	12/07
* 5-nitro-o-toluidine at third attack <i>UNI EN 13130-1:2005 + JRC-IHCP EU RL-FCM Aromatic amines Protocol A Ed.1 2011</i>		< 0.001		mg/kg	0.001	0.002	0_A		21/06	12/07
SUM OF PRIMARY AROMATIC AMINES IN ACETIC ACID 3% AT FIRST ATTACK <i>UNI EN 13130-1:2005 + JRC-IHCP EU RL-FCM Aromatic amines Protocol A Ed.1 2011</i>		< 0.01		mg/kg	0.01	0.01	0_A		21/06	12/07
SUM OF PRIMARY AROMATIC AMINES IN ACETIC ACID 3% AT SECOND ATTACK <i>UNI EN 13130-1:2005 + JRC-IHCP EU RL-FCM Aromatic amines Protocol A Ed.1 2011</i>		< 0.01		mg/kg	0.01	0.01	0_A		21/06	12/07

This test report shall not be reproduced except in full, without written approval of the laboratory. The original test report is supplied in digital form and digitally signed by the authorised responsible (file 23-FC01306.p7m). Printed copy of the mentioned original digital test report has no legal value.

Format Report: FC06.01 rev.10 of 17/07/2023

Page 7 of 8

P.H. s.r.l. Società unipersonale soggetta al controllo e al coordinamento di TÜV SÜD AG
 - Sede legale e Laboratorio Alimenti: Via Sangallo, 29 50028 Barberino Tavarnelle (FI)
 - Uffici e Laboratorio Ambiente: Via Bramante, 10/12 50028 Barberino Tavarnelle (FI)
 - Laboratorio Ambiente: Z.I. Tito Scalo 85050 Tito (PZ)

mailto: PHLabs@tuvsud.com web: www.tuv.it/ph
 telefono: +39 055 80961 fax: +39 055 8071099
 telefono: +39 055 80677 fax: +39 055 8067850
 telefono: +39 0971 485795 fax: +39 0971 485795



pH Labs



LAB N° 0069 L

N° 23-FC01306

Test Method	Chemical parameters	Results	unc	u.m.	LOQ	Limits	o.u.	Note	Start date	End date
SUM OF PRIMARY AROMATIC AMINES IN ACETIC ACID 3% AT THIRD ATTACK		< 0.01		mg/kg	0.01	0.01	0_A		21/06	12/07
UNI EN 13130-1:2005 + JRC-IHCP EU RL-FCM Aromatic amines Protocol A Ed 1 2011										

Legend:

unc = uncertainty; u.m. = unit of measurement; LOQ (limit of quantification); o.u. (operative unit); 0_A (test performed at o.u. Barberino Tavarnelle - FI, Sangallo street); 0_B (test performed at o.u. Barberino Tavarnelle - FI, Bramante street); II (mobile lab.); III (external analysis); LE.# (Subcontracted Test performed by a different lab.);

(* not accredited test by ACCREDIA)

(\$) The laboratory declines all responsibility for sampling.

(C) Information provided by the Client/Third Party. The laboratory accepts no responsibility for results obtained from calculations using data provided by the Client/Third Party.

Limits referred to Reg. UE 10/2011 + Reg. UE 1245/2020

NOTE

Ratio S/V = 14.2 dm2/l

- For Chemical test, expanded uncertainty is referred to 95% confidence level. Coverage factor k=2.
- The limit of determination (LOD) results as 3/10LOQ if not indicated otherwise.
- The Laboratory uses the point as decimal separator.
- Where a declaration of conformity to a specification or standard is required, unless the decision rule is already contained in the specification or standard itself, the laboratory shall adopt as its decision rule the direct comparison with the limit without taking into account the uncertainty.

NOTES AND GENERAL EVALUATIONS: (not subject to accreditation Accredia)

Limited to the parameters analyzed, the sample complies with Reg. EU 10/2011 and its amendments and with DM 21/03/1973 and its amendments

- The results refer to the sample as received.
- The reported results only refer to the tested sample. Sample conditions at the arrival are recorded in the laboratory managing system.
- Food and not perishable samples are store for 30 day from the arrival date. Water, compost and perishable samples are stored until the emission of the Test Report.
- pH is registered under number 013 on the regional list of approved laboratories for analysis in the context of self-control procedures in the food industry (LR Tuscany No. 9 09/03/2006).

Date, 14/08/2023



as per Technical Manager
dott. Patrizio Nuti

Number of documents
attached to this Test Report: 1

This test report shall not be reproduced except in full, without written approval of the laboratory. The original test report is supplied in digital form and digitally signed by the authorised responsible (file 23-FC01306.p7m). Printed copy of the mentioned original digital test report has no legal value.

Format Report: FC06.01 rev.10 of 17/07/2023

Page 8 of 8

P.H. s.r.l. Società unipersonale soggetta al controllo e al coordinamento di TÜV SÜD AG
- Sede legale e Laboratorio Alimenti: Via Sangallo, 29 50028 Barberino Tavarnelle (FI)
- Uffici e Laboratorio Ambiente: Via Bramante, 10/12 50028 Barberino Tavarnelle (FI)
- Laboratorio Ambiente: Z.I. Tilo Scalo 85050 Tilo (PZ)

mailto: PHLabs@tuvsud.com web: www.tuv.it/ph
telefono: +39 055 80961 fax: +39 055 8071099
telefono: +39 055 80677 fax: +39 055 8067850
telefono: +39 0971 485795 fax: +39 0971 485795



pH Labs

ATTACHED to the Test Report N° 23-FC01306



photo n. 1